

Lower Middle Tennessee Cattle Association

# VIDEO BOARD SALE

Friday, January 3, 2025

**9 a.m. CST**

**UPI — Columbia**

1231 Industrial Park Rd., Columbia, TN

View the catalog  
at [uproducers.com](http://uproducers.com)



Bid online  
at [lmauctions.com](http://lmauctions.com)



Sale management provided by:

United  
 **Producers, Inc.**



**WELCOME TO THE  
LOWER MIDDLE TENNESSEE CATTLE ASSOCIATION  
VIDEO BOARD SALE**

January 3, 2025

THIS OFFERING INCLUDES:

705 STEERS  
436 HEIFERS

**1,141 TOTAL HEAD OFFERED**

**\*\*\* AUCTIONEER \*\*\*:**

**Joe McKee**

**Lebanon, TN**

Sale starts at **9 AM CST** at the **Columbia Livestock Center:**  
1231 Industrial Park Road Columbia, TN

Please contact the office at (931) 223-8323 prior to the sale to reserve your line.

***SALE BROADCAST LIVE AT [www.lmauctions.com](http://www.lmauctions.com)***

For more information contact:

Dennis Wentzel  
President, LMTCA

Richard Brown  
UPI  
(931) 239-9785 (*cell*)

Frank Poling  
UPI  
(931) 212-9962 (*cell*)



LOWER MIDDLE TENNESSEE CATTLE ASSOCIATION  
VIDEO BOARD SALE

Management: United Producers, Inc.

**TERMS AND CONDITIONS**

**GENERAL**

1. By Participating in the auction, buyers and sellers expressly agree to adhere to the Terms and Conditions set forth herein and to the provisions set forth in the Video Cattle Marketing Contract.
2. Terms and Conditions of the sale are printed in sale catalog; however, announcements from the auction block take precedence over printed material.
3. All buyers and sellers who are not present at auction but who participate in the auction by any means shall be deemed to have authorized United Producers, Inc. to sign the Video Cattle Marketing Contract on their behalf.
4. Cattle are graded and identified as to breed, muscle score, frame size and flesh.
5. Cattle are available for viewing the week of the sale. Buyers wanting to see any lots should call United Producers, Inc. to schedule.

**PRICE SLIDE**

Based on advice from USDA Market News Service and/or U.T. Extension, the recommended price slide will be listed on each lot sold. Every effort has been made to give our best estimate on all weights.

Unless otherwise stated in individual lot sale conditions, Cattle 50 pounds or less over base weight will slide heavy side only at listed price slide.

Cattle will have a 50 lbs. weight stop unless otherwise noted.

**WEIGHTS AND WEIGHING INFO**

1. All weights given are best estimates as determined by United Producers, Inc. personnel, and consignor. Every effort has been made to be accurate; however, no guarantee is offered on the estimated weight or range.
2. A 36 HOUR NOTICE IS REQUIRED FROM BUYER TO UNITED PRODUCERS, INC. TO LOAD CATTLE. Cattle will be delivered per weighing conditions described in the catalog for each lot. Sellers will deliver all cattle consigned unless prevented from doing so by reasons beyond their control.
3. Unless otherwise stated or negotiated, Cattle must be picked up within 10 days of the sale date. Sundays are not available for delivery. All scheduled weighings are to be arranged through United Producers, Inc. with proper notice.
4. Cattle will be weighed and loaded by United Producers, Inc. employees or representatives. United Producers, Inc. will cut out any blemished or unmerchantable cattle with agreement of buyer and seller. Cattle will be weighed when all consigned cattle are at the scales or per catalog write-up if different.

**OPEN HEIFERS**

Unless otherwise provided in writing, heifers sold are not guaranteed open.

**PREGNANCY CHECKING OF HEIFERS**

Sellers may, at their discretion, allow a buyer to have the heifers they are purchasing pregnancy checked. If heifers are pregnancy checked, they must be checked at the Seller's Farm or at one of UPI's shipment facilities. Otherwise, buyer accepts heifers "as is".

**NO SALES**

Seller reserves the right to reject bids. In the event of a "NO SALE," the last bidder will be paid \$1.00 (one dollar) per head by the marketing agency, and the seller will be charged a fee of \$3.00 (three dollars) per head.

## **BINDER FEE**

United Producers, Inc. retains the authority to charge the buyer a binder fee of up to \$50.00 per head for each lot bought and to apply toward purchase of said lot, due upon request by United Producers, Inc. Buyers present at sale may pay this fee at the close of sale. Others may pay this fee within 3 days of the applicable sale date. A failure to pay the required binder fee will be considered a default.

## **SETTLEMENT**

All sales are due and payable immediately upon weighing of livestock and receipt of invoice. It is further expressly intended, understood, and agreed that this is a cash transaction.

## **TITLE AND LIABILITY**

1. Title and ownership of the cattle do not transfer to buyer, notwithstanding delivery or possession, until the purchase price is paid in full and all funds are collected.
2. Liability for loss of the cattle transfers to buyer at the time cattle are weighed or loaded onto truck whichever occurs first.

## **WARRANTIES**

The parties expressly agree that there are no warranties express or implied on any cattle listed or sold. All cattle are sold "as is."

## **DEFAULT**

In case of failure to perform any term or condition in the agreement by either buyer or seller, the defaulting party shall be liable for actual and incidental damages as permitted by law, plus court costs and reasonable attorney fees, as well as any other available relief. Default in payment shall include: 1.) Failure to receive full and final payment; 2.) Default of instrument given in payment; 3.) Death, bankruptcy or insolvency of buyer. Upon default, United Producers, Inc., with or without notice, may impose all rights afforded by law. The laws of the State of Tennessee shall govern.

## **FLESH SCORES**

1	Thin -	4	Medium -	7	Fleshy -
2	Thin	5	Medium	8	Fleshy
3	Thin +	6	Medium +	9	Fleshy +

## **COMMISSION & BEEF CHECKOFF**

Seller's Commission and Marketing fees are established by Lower Middle Tennessee Cattle Association in conjunction with United Producers, Inc. and will be charged on each lot. Additionally, \$1.00 per head will be deducted from seller for National Beef Checkoff and \$.50 per head for Tennessee State Beef Checkoff. (TN Beef Checkoff is a volunteer checkoff. All markets are required by law to deduct. A refund option is available through the Tennessee Department of Agriculture.)

## **INSURANCE**

Livestock Insurance on all sold livestock will be deducted from seller's proceeds at an established rate by the carrier to cover accidental death or injury at time of weigh up and load out.

## **ANIMAL DISEASE TRACEABILITY LAWS**

Beginning January 1, 2015, all livestock moved out of the state of origin must be accompanied by a Certificate of Health Inspection from an accredited veterinarian. It shall be the **Buyer's responsibility** to furnish necessary information at least 3 days prior to weigh up in order to obtain a certificate from the Seller. It shall then be the **Seller's responsibility** to provide the certificate or the information necessary to secure a certificate from the veterinarian.

# **UPI VIDEO SALE REPRESENTATIVES**

*Please contact one of our representatives for assistance.*

- GENERAL OFFICE                    931-223-8323
- FRANK POLING                      931-212-9962
- RICHARD BROWN                  931-239-9785
- JIMMY JENNINGS                 931-993-6817
- JOSH WOODWARD                 931-703-9090
- BRIAN LOVELL                     502-381-7984
- JONATHAN TREW                 423-584-9976
- ROGER UPTON                     931-309-8798



Sale Management provided by:



January 3, 2025

LOT#	SELLER	HEAD	AVG WT	
25-001	Dacosta & Fuller/ Brinkley	67	760	Steers
25-002	Jonathan Hensley	65	825	Steers
25-003	Heavenly Hollow Farms	30+/-	835	Steers
25-004	Heritage Livestock	65	850	Steers
25-005	Davhil Farm	65	850	Steers
25-006	Phil Dawson	59	850	Steers
25-007	Wayside Farms	40+/-	850	Steers
25-008	Heritage Livestock	65	865	Steers
25-009	Ray Farms (Black)	60	900	Steers
25-010	Ray Farms (Color)	60	900	Steers
25-011	Ward Pack	60	910	Steers
25-012	Ray Farms	69	960	Steers
25-013	Jonathan Hensley	59	725	Heifers
25-014	Phil Dawson	40	725	Heifers
25-015	Benjie Daniel	145	750	Heifers
25-016	J Brinkley Farm	34+/-	760	Heifers
25-017	2Z Cattle	70	775	Heifers
25-018	Heavenly Hollow Farms	23+/-	800	Heifers
25-019	West Farms	65	835	Heifers



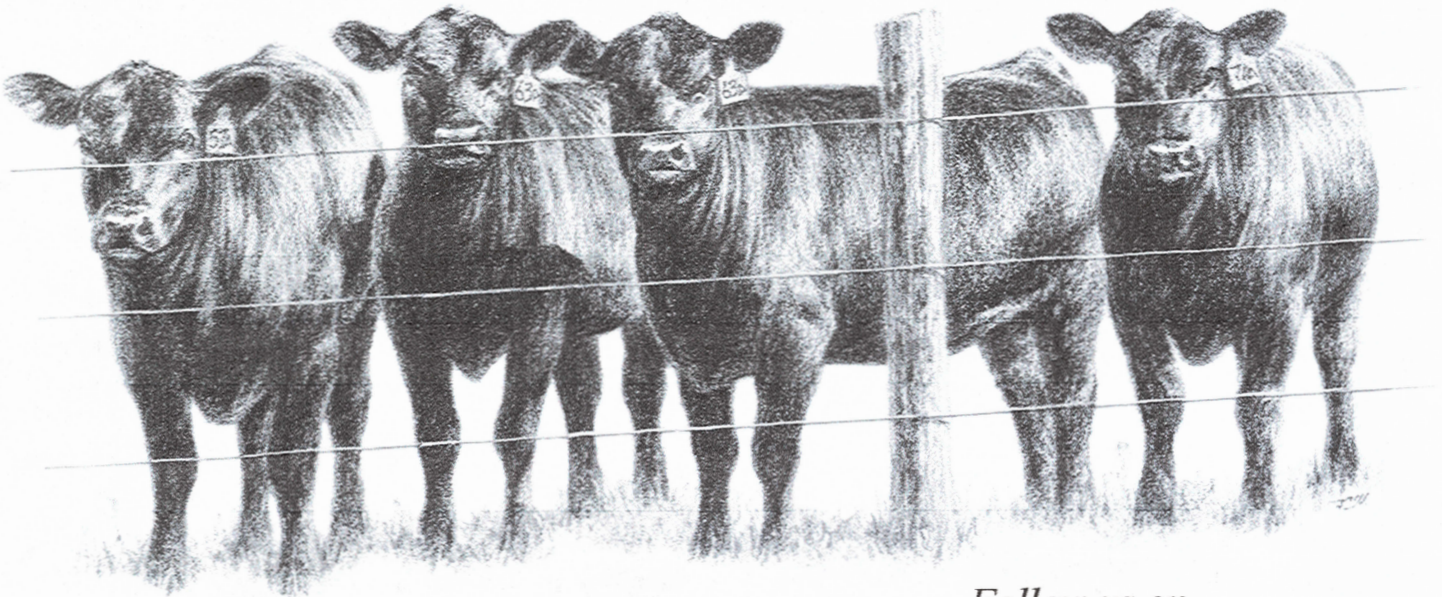




Have all your animal health needs  
delivered directly to your door...

# From Antibiotics and Vaccines to Ear Tags and Wormers

If your cattle need it, we can provide it.



Contact Us Today at 888-699-5088  
[www.performance-feeds.com](http://www.performance-feeds.com)

Follow us on



# BEFORE YOU SEND THEM OFF, MAKE SURE THEY'RE PROTECTED.

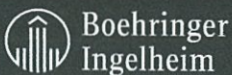
Use Pyramid<sup>®</sup> 5 + Presponse<sup>®</sup> SQ, the only vaccine  
labeled to protect against BVD 1b.



It's time to go back to school on protecting your calves from respiratory disease. With BVD 1b increasingly prevalent in calves, make PYRAMID 5 + PRESPONSE SQ a part of your preconditioning routine this fall. With the broadest overall protection, PYRAMID 5 + PRESPONSE SQ ensures that your calves are being protected against BVD Type 1, Type 1b and Type 2, along with IBR, BRSV, PI<sub>3</sub> and *M. haemolytica*. So, make sure you have another successful year by contacting your Boehringer Ingelheim Vetmedica, Inc. representative today.

PREVENTION WORKS.

Learn more at [bi-vetmedica.com/cattle](http://bi-vetmedica.com/cattle).



Prevention Works does not imply prevention label claims for use of a vaccine/vaccines.  
PYRAMID and PRESPONSE are registered trademarks of Boehringer Ingelheim Vetmedica, Inc.  
©2015 Boehringer Ingelheim Vetmedica, Inc. BVI/PYPR/151047.

**PYRAMID<sup>®</sup> 5**  
**+ PRESPONSE<sup>®</sup> SQ**

**Lot 25-001**

**OWNER:** Dacosta/Fuller & Brinkley  
Wartrace/Shelbyville TN  
**BQA #:** TN #496/#17277  
**# HEAD:** 67 Steers  
**EST. AVG. WEIGHT:** 760  
**EST. WEIGHT RANGE:** 650-800  
**USDA GRADES:** 95% L-1 & M-1 5% L-2 & M-2  
**FLESH #:** 5

**DESCRIPTION:**  
63 Black & BB, 3 RB, 1 Char X

Weaned 75+ days. Home Raised by Angus or Sim-Angus bulls.

*Cattle are not running together*

Few with Pinkey scars.

**MANAGEMENT:**  
Cattle are on pasture plus 5# per head per day of 13% Ogle Beef Grower and mineral with Bovatec.

2 shots each in neck— Express 5, Pyramid 5, Virashield 6

Dewormed with Eprinex. Implanted with Ralgro. Castrated with knife.

**CONDITIONS:**  
Cattle will be penned by 7:00 AM morning of weigh up in a dry lot. Hauled approx. 30 miles to UPI Fayetteville Livestock Center by 9:00 AM and weighed on the ground straight.

**TAKE 48,000-50,000# LOAD OFF HEAVY END**

Available January 6th, 8th—13th

**UPI REPRESENTATIVE:** Frank Poling



**SLIDE: Up Only:** 10 Cents

**PRICE/CWT:** \_\_\_\_\_

**BUYER:** \_\_\_\_\_

**Lot 25-002**

**OWNER:** Jonathan Hensley  
Cypress Inn TN  
**BQA #:**  
**# HEAD:** 65 Steers  
**EST. AVG. WEIGHT:** 825  
**EST. WEIGHT RANGE:** 750-900  
**USDA GRADES:** 95% L-1 & M-1 5% L-2 & M-2  
**FLESH #:** 5

**DESCRIPTION:**  
63 Black, 1 Red, 1 RB

Weaned September 1, 2024. Home Raised by Angus bulls.

**MANAGEMENT:**  
Cattle are on pasture and hay plus 18# per head per day of Commodity mix feed with mineral.

1 shot each in neck— Virashield 6, 7-way Blackleg, Pyramid 5 + Presponse, Alpha 7 MB-1

Dewormed with Eprinex. Implanted with Ralgro in middle of September 2024.

**CONDITIONS:**  
Cattle will be penned by 7:00 AM morning of weigh up in a dry lot. Hauled 4 miles to Gary Daniels' farm scales and weighed on the ground with a 2% shrink.

**TAKE 48,000-50,000# LOAD OFF HEAVY END**

Available January 6th—13th

**CANNOT LOAD SAME DAY AS LOT 25-013**

**UPI REPRESENTATIVE:** Frank Poling



**SLIDE: Up Only:** 9 Cents

**PRICE/CWT:** \_\_\_\_\_

**BUYER:** \_\_\_\_\_

Lot 25-003

OWNER: Heavenly Hollow Farms  
McEwen TN  
BQA #:  
# HEAD: 30+/- Steers  
EST. AVG. WEIGHT: 835  
EST. WEIGHT RANGE: 750-900  
USDA GRADES: 90% L-1 & M-1 10% L-2 & M-2  
FLESH #: 5

DESCRIPTION:  
26 Black & BB, 1 Red, 3 Char X

Weaned 60+ days. Home Raised by Angus, Hereford, or Sim-Angus bulls.

MANAGEMENT:  
Cattle are on pasture and 35# per head per day of a Silage based TMR plus Co-op Pro-Lix liquid protein.

2 shots each in neck—Caliber 7

1 shot each in neck—Pyramid 5 + Presponse SQ,  
Pyramid 5, Pinkeye

Dewormed with Eprinex and Dectomax. Implanted with Ralgro.

CONDITIONS:  
Cattle will be penned by 7:00 AM morning of weigh up in a dry lot. Weighed at Heavenly Hollow Farm's scales on the ground with a 2% shrink.

TAKE ALL

Available January 6th—13th

UPI REPRESENTATIVE: Josh Woodward

SLIDE: Up Only: 9 Cents



PRICE/CWT: \_\_\_\_\_

BUYER: \_\_\_\_\_

Lot 25-004

OWNER: Heritage Livestock  
Bowling Green KY  
BQA #:  
# HEAD: 65 Steers  
EST. AVG. WEIGHT: 850  
EST. WEIGHT RANGE: 800-900  
USDA GRADES: 90% L-1 & M-1 10% L-2 & M-2  
FLESH #: 5

DESCRIPTION:  
100% Black & BB

Cattle put together in September 2024.

PI NEGATIVE

MANAGEMENT:  
Cattle are on pasture plus 18# per head per day of a TMR.

1 shot each in neck—Vision 7, Titanium 3, ENDOVAC-Beef,  
Nuplura PH

Dewormed with Cydectin. Implanted with Component TE-G.

CONDITIONS:  
Cattle will be penned by 7:00 AM morning of weigh up in a dry lot. Weighed at Heritage Livestock on the ground with a 2% shrink.

TAKE 48,000-50,000# LOAD OFF HEAVY END

Available January 14th—17th—Seller's Option

UPI REPRESENTATIVE: Frank Poling

SLIDE: Up Only: 8 Cents



PRICE/CWT: \_\_\_\_\_

BUYER: \_\_\_\_\_

Lot 25-005

OWNER: Davhil Farm  
Shelbyville TN  
BQA #: TN #5062  
# HEAD: 65 Steers  
EST. AVG. WEIGHT: 850  
EST. WEIGHT RANGE: 750-950  
USDA GRADES: 90% L-1 & M-1 10% L-2 & M-2  
FLESH #: 5

DESCRIPTION:  
61 Black & BB, 2 Red, 2 Char X  
1 hd with 1/8 ear

Cattle put together in August 2024 as 6 wts.

MANAGEMENT:  
Cattle are on hay plus 25# per head per day of a TMR of corn silage, 3# shelled corn, and 1.5# of 53% Beef Concentrate with free choice Co-op mineral with Rumensin.

2 shots each in neck—Express 5 HS, Covexin 8

Dewormed with Eprinex Pour On. No implants.

CONDITIONS:  
Cattle will be penned by 7:00 AM morning of weigh up in a dry lot. Cattle will be hauled 6 miles to Gilmore Livestock by 9:00 AM and weighed on the ground with a 1% shrink.

TAKE 48,000-50,000# LOAD OFF HEAVY END

Available January 6th—13th

UPI REPRESENTATIVE: Frank Poling

SLIDE: Up Only: 9 Cents



PRICE/CWT: \_\_\_\_\_

BUYER: \_\_\_\_\_

Lot 25-006

OWNER: Phil Dawson  
White Bluff TN  
BQA #:  
# HEAD: 59 Steers  
EST. AVG. WEIGHT: 850  
EST. WEIGHT RANGE: 750-900  
USDA GRADES: 95% L-1 & M-1 5% L-2 & M-2  
FLESH #: 5

DESCRIPTION:  
90% Black & BB, 10% Red, RB, Char X

Weaned August 1, 2024. Home Raised by Angus or Sim-Angus bulls.

MANAGEMENT:  
Cattle are on 40# per head per day of a TMR.

1 shot each in neck— Pyramid 5 + Presponse SQ, Boostered with Pyramid 5, Pinkeye, Alpha 7 MB-1

\*All vet work was performed by Co-op Vet\*

Dewormed with Dectomax/Synanthic. No implants.  
Castrated with knife.

CONDITIONS:  
Cattle will be penned by 7:00 AM morning of weigh up in a dry lot. Buyers truck get tare wt by 7:30 AM and travel 15 miles to farm, load and haul to TA Truck Stop, Exit 188 off I-40 and weigh on truck with a 2% shrink.

TAKE 48,000-50,000# LOAD OFF HEAVY END

Available January 6th—13th

CANNOT LOAD SAME DAY AS LOT 25-014

UPI REPRESENTATIVE: Josh Woodward

SLIDE: Up Only: 9 Cents



PRICE/CWT: \_\_\_\_\_

BUYER: \_\_\_\_\_

**Lot 25-007**

**OWNER:** Wayside Farms  
Shelbyville TN

**BQA #:**  
**# HEAD:** 40+/- Steers  
**EST. AVG. WEIGHT:** 850  
**EST. WEIGHT RANGE:** 775-900  
**USDA GRADES:** 90% L-1 & M-1 10% L-2 & M-2  
**FLESH #:** 5

**DESCRIPTION:**  
39 Black & BB, 1 Char X

*Cattle put together in April 2024.*

**MANAGEMENT:**  
Cattle are on pasture/hay and silage plus 5# per head per day of #94176PE 14% Co-op Beef pellet and free choice #678 Co-op Supreme mineral.

2 shots each in neck—Covexin 8  
1 shot each in neck—Express 5 HS, Pyramid 5

Dewormed with Generic Ivomec. Implanted with Ralgro.

**CONDITIONS:**  
Cattle will be penned at 7:00 AM morning of weigh up in a dry lot. Hauled 15 miles to Gilmore Livestock by 9:00 AM and weighed with a 1% shrink.

**TAKE ALL**

Available January 6th—13th

**UPI REPRESENTATIVE:** Richard Brown

**SLIDE: Up Only:** 9 Cents



**PRICE/CWT:** \_\_\_\_\_

**BUYER:** \_\_\_\_\_

**Lot 25-008**

**OWNER:** Heritage Livestock  
Bowling Green KY

**BQA #:**  
**# HEAD:** 65 Steers  
**EST. AVG. WEIGHT:** 865  
**EST. WEIGHT RANGE:** 800-900  
**USDA GRADES:** 90% L-1 & M-1 10% L-2 & M-2  
**FLESH #:** 5

**DESCRIPTION:**  
100% Black & BB

*Cattle put together in September 2024.*

**PI NEGATIVE**

**MANAGEMENT:**  
Cattle are on pasture plus 18# per head per day of a TMR.

1 shot each in neck—Vision 7, Titanium 3, ENDOVAC-Beef, Nuplura PH

Dewormed with Cydectin. Implanted with Component TE-G.

**CONDITIONS:**  
Cattle will be penned by 7:00 AM morning of weigh up in a dry lot. Weighed at Heritage Livestock on the ground with a 2% shrink.

**TAKE 48,000-50,000# LOAD OFF HEAVY END**

Available January 7th—10th—Seller's Option

**UPI REPRESENTATIVE:** Frank Poling

**SLIDE: Up Only:** 8 Cents



**PRICE/CWT:** \_\_\_\_\_

**BUYER:** \_\_\_\_\_

**Lot 25-009**

**OWNER:** Ray Farms  
Tullahoma TN  
**BQA #:** TN #1715  
**# HEAD:** 60 Steers  
**EST. AVG. WEIGHT:** 900  
**EST. WEIGHT RANGE:** 850-950  
**USDA GRADES:** 95% L-1 & M-1 5% L-2 & M-2  
**FLESH #:** 5

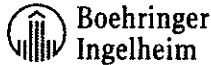
**DESCRIPTION:**  
100% Black & BB

**PI NEGATIVE**

**MANAGEMENT:**

Cattle are on pasture and hay plus wet stillage and 3# per head per day of Co-op pellets stillage booster with ProSolution mineral with Rumensin.

1 shot each in neck—Pyramid 5+Presponse, Pyramid 5, Caliber 7



Dewormed and deloused with Eprinex. Implanted with Component TE-G. Castrated with knife.

**CONDITIONS:**

Cattle will be penned by 7:00 AM morning of weigh up in a dry lot. Buyers truck get tare wt by 7:00 AM and travel 30 miles to farm, load and haul to Jack Daniels Distillery and weigh on truck with a 2% shrink. Cattle can be weighed at Exit 114, Truck Plaza in Manchester.

**TAKE 48,000-50,000# LOAD OFF HEAVY END**

**Truck must weigh on a 70' scale - NO SPLIT WEIGHING**

**Available January 6th—13th**

**UPI REPRESENTATIVE:** Frank Poling

**SLIDE: Up Only: 8 Cents**



**PRICE/CWT:** \_\_\_\_\_

**BUYER:** \_\_\_\_\_

**Lot 25-010**

**OWNER:** Ray Farms  
Tullahoma TN  
**BQA #:** TN #1715  
**# HEAD:** 60 Steers  
**EST. AVG. WEIGHT:** 900  
**EST. WEIGHT RANGE:** 850-975  
**USDA GRADES:** 95% L-1 & M-1 5% L-2 & M-2  
**FLESH #:** 5

**DESCRIPTION:**  
85% Black & BB, 15% Red, RB, Char X

**PI NEGATIVE**

**MANAGEMENT:**

Cattle are on pasture and hay plus wet stillage and 3# per head per day of Co-op pellets stillage booster with ProSolution mineral with Rumensin.

1 shot each in neck—Pyramid 5 + Presponse, Pyramid 5, Caliber 7



Dewormed and deloused with Eprinex. Implanted with Component TE-G. Castrated with knife.

**CONDITIONS:**

Cattle will be penned by 7:00 AM morning of weigh up in a dry lot. Buyers truck get tare wt by 7:00 AM and travel 30 miles to farm, load and haul to Jack Daniels Distillery and weigh on truck with a 2% shrink. Cattle can be weighed at Exit 114, Truck Plaza in Manchester.

**TAKE 48,000-50,000# LOAD OFF HEAVY END**

**Truck must weigh on a 70' scale - NO SPLIT WEIGHING**

**Available January 6th—13th**

**UPI REPRESENTATIVE:** Frank Poling

**SLIDE: Up Only: 8 Cents**



**PRICE/CWT:** \_\_\_\_\_

**BUYER:** \_\_\_\_\_



**Lot 25-011**

**OWNER:** Ward Pack  
Wartrace TN

**BQA #:**  
**# HEAD:** 60 Steers  
**EST. AVG. WEIGHT:** 910  
**EST. WEIGHT RANGE:** 850-975  
**USDA GRADES:** 90% L-1 & M-1 10% L-2 & M-2  
**FLESH #:** 5

**DESCRIPTION:**  
46 Black & BB, 5 Red & RB, 9 Char X  
3-4 hd with 1/8 ear

*Cattle put together as 6 wts*

**MANAGEMENT:**  
Cattle are on pasture plus 10# per head per day of Commodity mix feed with mineral.

1 shot each in neck—Bovishield Gold 5, Covexin 8

Dewormed with Cydectin. Castrated. Implanted with Component TE-G.

**CONDITIONS:**  
Cattle will be penned by 7:00 AM morning of weigh up in a dry lot. Buyers truck get tare wt by 7:00 AM and travel 35 miles to farm, load and haul to Love's TS, I-24, Exit 89 and weigh on truck with a 2% shrink.

**TAKE 48,000-50,000# LOAD OFF HEAVY END**

Available January 6th—13th

**UPI REPRESENTATIVE:** Frank Poling

**SLIDE: Up Only:** 8 Cents



**PRICE/CWT:** \_\_\_\_\_

**BUYER:** \_\_\_\_\_

**Lot 25-012**

**OWNER:** Ray Farms  
Tullahoma TN

**BQA #:** TN #1715  
**# HEAD:** 69 Steers  
**EST. AVG. WEIGHT:** 960  
**EST. WEIGHT RANGE:** 875-1000  
**USDA GRADES:** 95% L-1 & M-1 5% L-2 & M-2  
**FLESH #:** 5 few 6

**DESCRIPTION:**  
59 Black & BB, 4 Red, 6 Char X

**PI NEGATIVE**

**MANAGEMENT:**  
Cattle are on pasture and hay plus wet stillage and 3# per head per day of Co-op pellets stillage booster with ProSolution mineral with Rumensin.

1 shot each in neck—Pyramid 5 + Presponse, Pyramid 5, Caliber 7



Dewormed and deloused with Eprinex. Implanted with Component TE-G. Castrated with knife.

**CONDITIONS:**  
Cattle will be penned by 7:00 AM morning of weigh up in a dry lot. Buyers truck get tare wt by 7:00 AM and travel 30 miles to farm, load and haul to Jack Daniels Distillery and weigh on truck with a 2% shrink. Cattle can be weighed at Exit 114, Truck Plaza in Manchester.

**TAKE 48,000-50,000# LOAD OFF HEAVY END**

**Truck must weigh on a 70' scale - NO SPLIT WEIGHING**

Available January 6th—13th

**UPI REPRESENTATIVE:** Frank Poling

**SLIDE: Up Only:** 8 Cents



**PRICE/CWT:** \_\_\_\_\_

**BUYER:** \_\_\_\_\_

Follow us



# Performance Feeds




Serving the Southeastern United States

Specializing In:

- Complete Feeds
- Premixes
- Supplements
- Minerals
- Low Moisture Tubs
- Commodities
- Animal Health Supplies

We Deliver High Quality Livestock Feeds  
at the **Lowest Possible Cost to the Producer.**



Contact Us Today at 866-699-5080  
Or Visit Us on the Web at [www.performance-feeds.com](http://www.performance-feeds.com)

**INFORCE™ 3**

**ONE SHOT®  
BVD**

Complete respiratory protection

INFORCE™ 3 & ONE SHOT® BVD give you a lot of &s when it comes to calf immunization.

It begins with intranasal INFORCE 3 & the rapid innate & active immunity it provides where IBR, BRSV & PI<sub>3</sub> respiratory diseases start & continues with immune system priming against future exposure. Plus, when you administer ONE SHOT BVD subcutaneously, your calves receive superior Type 1 BVD & Type 2 BVD & *Mannheimia haemolytica* protection.

Because when you start with a balanced immunization program, you help calves stay healthy & grow to their potential & prevent the spread of diseases & earn a better price at market & ... well, you get the picture.

**Learn more by contacting your local Zoetis representative or visiting [CompleteCalfProtection.com](http://CompleteCalfProtection.com).**

All trademarks are the property of Zoetis Inc., its affiliates and/or its licensors.  
© 2016 Zoetis Inc. All rights reserved. INF-00025

**zoetis**

**Lot 25-013**

**OWNER:** Jonathan Hensley  
Cypress Inn TN

**BQA #:**

**# HEAD:** 59 Heifers

**EST. AVG. WEIGHT:** 725

**EST. WEIGHT RANGE:** 650-800

**USDA GRADES:** 95% L-1 & M-1 5% L-2 & M-2

**FLESH #:** 5

**DESCRIPTION:**  
54 Black & BB, 3 Red & RB, 2 Herefords

Weaned September 1, 2024. Home Raised by Angus bulls.

**MANAGEMENT:**  
Cattle are on pasture and hay plus 18# per head per day of Commodity mix feed with mineral.

1 shot each in neck— Virashield 6, 7-way Blackleg, Pyramid 5 + Presponse, Alpha 7 MB-1

Dewormed with Eprinex. Implanted with Ralgro in middle of September 2024.

**CONDITIONS:**  
Cattle will be penned by 7:00 AM morning of weigh up in a dry lot. Hauled 4 miles to Gary Daniels' farm scales and weighed on the ground with a 2% shrink. **CAN BE PREG CHECKED, AFTER WGH UP, PRIOR TO SHIPMENT AT BUYERS EXPENSE—3 DAY NOTICE REQUIRED.**

**TAKE ALL**

Available January 6th—13th

**CANNOT LOAD SAME DAY AS LOT 25-002**

**UPI REPRESENTATIVE:** Frank Poling

**SLIDE: Up Only:** 10 Cents



**PRICE/CWT:** \_\_\_\_\_

**BUYER:** \_\_\_\_\_

**Lot 25-014**

**OWNER:** Phil Dawson  
White Bluff TN

**BQA #:**

**# HEAD:** 40 Heifers

**EST. AVG. WEIGHT:** 725

**EST. WEIGHT RANGE:** 625-800

**USDA GRADES:** 95% L-1 & M-1 5% L-2 & M-2

**FLESH #:** 5

**DESCRIPTION:**  
90% Black & BB, 10% Red, RB, Char X

Weaned August 1, 2024. Home Raised by Angus or Sim-Angus bulls.

**MANAGEMENT:**  
Cattle are on 40# per head per day of a TMR.

1 shot each in neck— Pyramid 5 + Presponse SQ, Boostered with Pyramid 5, Pinkeye, Alpha 7 MB-1

*\*All vet work was performed by Co-op Vet\**

Dewormed with Dectomax/Synanthic. No implants.

**CONDITIONS:**  
Cattle will be penned by 7:00 AM morning of weigh up in a dry lot. Buyers truck get tare wt by 7:30 AM and travel 15 miles to farm, load and haul to TA Truck Stop, Exit 188 off I-40 and weigh on truck with a 2% shrink. **CAN BE PREG CHECKED, AFTER WGH UP, PRIOR TO SHIPMENT AT BUYERS EXPENSE—3 DAY NOTICE REQUIRED.**

**TAKE 48,000-50,000# LOAD OFF HEAVY END**

Available January 6th—13th

**CANNOT LOAD SAME DAY AS LOT 25-006**

**UPI REPRESENTATIVE:** Josh Woodward

**SLIDE: Up Only:** 10 Cents



**PRICE/CWT:** \_\_\_\_\_

**BUYER:** \_\_\_\_\_

**Lot 25-015**

**OWNER:** Benjie Daniel  
Charlotte TN

**BQA #:**  
**# HEAD:** 145 Heifers  
**EST. AVG. WEIGHT:** 750  
**EST. WEIGHT RANGE:** 700-800  
**USDA GRADES:** 90% L-1 & M-1 10% L-2 & M-2  
**FLESH #:** 5

**DESCRIPTION:**  
143 Black & BB, 2 Red  
(Option to make loads all black)

Cattle put together October 2, 2024.

**PI NEGATIVE**

**HEIFERS WILL BE PREG CHECKED PRIOR TO SALE**

**MANAGEMENT:**  
Cattle are on a TMR consisting of corn silage, ryegrass silage, and Beef Concentrate.

**2 shots each in neck**—Vision 7

**1 shot each in neck**—Pyramid 5 + Presponse SQ,  
Boostered with Pyramid 5

Dewormed with Synanthic and Eprinex Pour-On.  
Implanted with Revalor-G.

**CONDITIONS:**  
Cattle will be penned by 7:00 AM morning of weigh up in a dry lot. Cattle will be weighed on the ground at Benjie Daniel's farm scales with a 2% shrink.

**TAKE 2/48,000-50,000# LOAD OFF HEAVY END**

Available January 6th—13th

**UPI REPRESENTATIVE:** Josh Woodward

**SLIDE: Up Only:** 10 Cents



**PRICE/CWT:** \_\_\_\_\_

**BUYER:** \_\_\_\_\_

**Lot 25-016**

**OWNER:** J Brinkley Farm  
Shelbyville TN

**BQA #:**  
**# HEAD:** 34+/- Heifers  
**EST. AVG. WEIGHT:** 760  
**EST. WEIGHT RANGE:** 650-800  
**USDA GRADES:** 95% L-1 & M-1 5% L-2 & M-2  
**FLESH #:** 5

**DESCRIPTION:**  
100% Black & BB  
1 hd with 1/8 ear

Weaned 75+ days. Home Raised by Angus or Hereford bulls.

**MANAGEMENT:**  
Cattle are on pasture and hay plus 8# per head per day of 14% Co-op Medicated commodity blend feed and all-purpose mineral with Rumensin.

**2 shots each in neck**— Express 5, Virashield 6, BarVac7/  
Somnus

**1 shot each in neck**— Lutalyse

Dewormed with Ivomec Injectable. No implants.

**CONDITIONS:**  
Cattle will be penned by 7:00 AM morning of weigh up in a dry lot. Hauled 30 miles to UPI Fayetteville Livestock Center by 9:00 AM and weighed on the ground straight.

**CAN BE PREG CHECKED, AFTER WGH UP, PRIOR TO SHIPMENT AT BUYERS EXPENSE—3 DAY NOTICE REQUIRED.**

**TAKE ALL**

Available January 6th, 8th—13th

**UPI REPRESENTATIVE:** Frank Poling

**SLIDE: Up Only:** 10 Cents



**PRICE/CWT:** \_\_\_\_\_

**BUYER:** \_\_\_\_\_

**Lot 25-017**

**OWNER:** 22 Cattle  
Culleoka TN

**BQA #:**  
**# HEAD:** 70 Heifers  
**EST. AVG. WEIGHT:** 775  
**EST. WEIGHT RANGE:** 700-850  
**USDA GRADES:** 90% L-1 & M-1 10% L-2 & M-2  
**FLESH #:** 5 few 4

**DESCRIPTION:**  
80% Black & BB, 20% Red, RB, & Char X  
1-2 hd with 1/8 ear

*Cattle put together 90+ days.*

**PREG CHECKED OPEN**

**MANAGEMENT:**  
Cattle are on pasture and hay plus 12# per head per day of Commodity mix feed.

2 shots each in neck— Bovishield Gold, Vision 7/Somnus  
1 shot each in neck— Multimin 90

Dewormed with Ivomec Injectable. No implants.

**CONDITIONS:**  
Cattle will be penned by 7:00 AM morning of weigh up in a dry lot. Weighed at Inman Farm's scales by 8:00 AM and weighed on the ground with a 2% shrink.

**TAKE A 48,000-50,000# LOAD - BUYER'S CHOICE**

Available January 6th—13th

**UPI REPRESENTATIVE:** Frank Poling

**SLIDE: Up Only:** 10 Cents



**PRICE/CWT:** \_\_\_\_\_

**BUYER:** \_\_\_\_\_

**Lot 25-018**

**OWNER:** Heavenly Hollow Farms  
McEwen TN

**BQA #:**  
**# HEAD:** 23+/- Heifers  
**EST. AVG. WEIGHT:** 800  
**EST. WEIGHT RANGE:** 750-850  
**USDA GRADES:** 90% L-1 & M-1 10% L-2 & M-2  
**FLESH #:** 5

**DESCRIPTION:**  
20 Black & BB, 1 Red, 2 Char X

Weaned 60+ days. Home Raised by Angus, Hereford, or Sim-Angus bulls.

**MANAGEMENT:**  
Cattle are on pasture and 35# per head per day of a Silage based TMR plus Co-op Pro-Lix liquid protein.

2 shots each in neck—Caliber 7  
1 shot each in neck—Pyramid 5 + Presponse SQ,  
Pyramid 5, Pinkeye

Dewormed with Eprinex and Dectomax. Implanted with Ralgro.

**CONDITIONS:**  
Cattle will be penned by 7:00 AM morning of weigh up in a dry lot. Weighed at Heavenly Hollow Farm's scales on the ground with a 2% shrink. **CAN BE PREG CHECKED, AFTER WGH UP, PRIOR TO SHIPMENT AT BUYERS EXPENSE— 3 DAY NOTICE REQUIRED.**

**TAKE ALL**

Available January 6th—13th

**UPI REPRESENTATIVE:** Josh Woodward

**SLIDE: Up Only:** 9 Cents



**PRICE/CWT:** \_\_\_\_\_

**BUYER:** \_\_\_\_\_

**Lot 25-019**

**OWNER:** West Farms  
Columbia TN

**BQA #:** TN #280

**# HEAD:** 65 Heifers

**EST. AVG. WEIGHT:** 835

**EST. WEIGHT RANGE:** 775-900

**USDA GRADES:** 95% L-1 & M-1 5% L-2 & M-2

**FLESH #:** 5

**DESCRIPTION:**

85% Black & BB, 15% Red, RB, & Char X

**50% Home Raised by Angus bulls. Cattle put together**  
*120+ days.*

Few with Pinkeye scars.

**MANAGEMENT:**

Cattle are on pasture and hay plus 12# per head per day of Commodity blend feed with mineral.

**1 shot each**— Nasalgen 3 PMH, Boostered with Bovishield Gold 5, 7 Way Blackleg

Dewormed with Longrange. Implanted with Ralgro.

**CONDITIONS:**

Cattle will be penned by 7:00 AM morning of weigh up in a dry lot. Hauled 6 miles to UPI Columbia Livestock Center by 9:00 AM and weigh on ground with a **2% shrink**. **CAN BE PREG CHECKED, AFTER WGH UP, PRIOR TO SHIPMENT AT BUYERS EXPENSE—3 DAY NOTICE REQUIRED.**

**TAKE 48,000-50,000# LOAD OFF HEAVY END**

**Available January 6th—7th, 9th—12th**

**UPI REPRESENTATIVE:** Frank Poling

**SLIDE: Up Only:** 9 Cents



**PRICE/CWT:** \_\_\_\_\_

**BUYER:** \_\_\_\_\_

# PROVEN.

## YOUR EXPANDED FAMILY OF CATTLE MINERALS.

FEEDS • KNOW-HOW • CARE

**CO-OP**

 **PURINA**



[protritionfeed.com](http://protritionfeed.com)

# PROTRITION®

— PROVEN ANIMAL NUTRITION & CARE SOLUTIONS —





Cattle First.



5% Sterile Solution Extended-Release Injectable  
For Subcutaneous Use  
Parasiticide for Cattle on Pasture

For the Treatment and Control of Internal and External Parasites of Cattle on Pasture with Persistent Effectiveness

Not for use in female dairy cattle 20 months of age or older, including dry dairy cows. Not for use in calves to be processed for veal.

Not for use in breeding bulls, or in calves less than 3 months of age.

Not for use in cattle managed in feedlots or under intensive rotational grazing.

Caution: Federal law restricts this drug to use by or on the order of a licensed veterinarian.

INDICATIONS FOR USE

LONGRANGE, when administered at the recommended dose volume of 1 mL per 110 lb (50 kg) body weight, is effective in the treatment and control of the following internal and external parasites of cattle:

Gastrointestinal Roundworms	Lungworms
<i>Bunostomum phlebotomum</i> – Adults and L <sub>4</sub>	
<i>Cooperia oncophora</i> – Adults and L <sub>4</sub>	<i>Dictyoaculus viviparus</i> – Adults
<i>Cooperia punctata</i> – Adults and L <sub>4</sub>	
<i>Cooperia surnabada</i> – Adults and L <sub>4</sub>	<b>Grubs</b>
<i>Haemonchus placei</i> – Adults	
<i>Oesophagostomum radiatum</i> – Adults	<i>Hypoderma bovis</i>
<i>Ostertagia lyrata</i> – Adults	
<i>Ostertagia ostertagi</i> – Adults, L <sub>4</sub> and inhibited L <sub>4</sub>	<b>Mites</b>
<i>Trichostrongylus axei</i> – Adults and L <sub>4</sub>	
<i>Trichostrongylus colubriformis</i> – Adults	<i>Sarcoptes scabiei</i> var. <i>bovis</i>

DOSEAGE AND ADMINISTRATION

LONGRANGE® (eprinomectin) should be given only by subcutaneous injection in front of the shoulder at the recommended dosage level of 1 mg eprinomectin per kg body weight (1 mL per 110 lb body weight). Each mL of LONGRANGE contains 50 mg of eprinomectin, sufficient to treat 110 lb (50 kg) body weight. Divide doses greater than 10 mL between two injection sites to reduce occasional discomfort or site reaction.

Body Weight (lb)	Dose Volume (mL)
110	1
220	2
330	3
440	4
550	5
660	6
770	7
880	8
990	9
1100	10

Do not underdose. Ensure each animal receives a complete dose based on a current body weight. Underdosing may result in ineffective treatment, and encourage the development of parasite resistance.



WARNINGS AND PRECAUTIONS

Withdrawal Periods and Residue Warnings

Animals intended for human consumption must not be slaughtered within 48 days of the last treatment. This drug product is not approved for use in female dairy cattle 20 months of age or older, including dry dairy cows. Use in these cattle may cause drug residues in milk and/or in calves born to these cows. A withdrawal period has not been established for pre-ruminating calves. Do not use in calves to be processed for veal.

User Safety Warnings

Not for Use in Humans. Keep this and all drugs out of the reach of children. Reproductive and developmental toxicities have been reported in laboratory animals following high, repeated exposures to N-methyl-2-pyrrolidone (NMP). Pregnant women should wear gloves and exercise caution or avoid handling this product. The Safety Data Sheet (SDS) contains more detailed occupational safety information.

To report adverse effects, to obtain an SDS, or for assistance, contact Boehringer Ingelheim Animal Health USA Inc. at 1-888-637-4251. For additional information about adverse drug experience reporting for animal drugs, contact FDA at 1-888-FDA-VETS or www.fda.gov/reportanimalae.

Animal Safety Warnings and Precautions

The product is likely to cause tissue damage at the site of injection, including possible granulomas and necrosis. These reactions have disappeared without treatment. Local tissue reaction may result in trim loss of edible tissue at slaughter.

Observe cattle for injection site reactions. If injection site reactions are suspected, consult your veterinarian. This product is not for intravenous or intramuscular use. Protect product from light. LONGRANGE® (eprinomectin) has been developed specifically for use in cattle only. This product should not be used in other animal species.

When to Treat Cattle with Grubs

LONGRANGE effectively controls all stages of cattle grubs. However, proper timing of treatment is important. Consult your veterinarian concerning the proper time for treatment.

Environmental Hazards

Not for use in cattle managed in feedlots or under intensive rotational grazing because the environmental impact has not been evaluated for these scenarios.

Other Warnings: Parasite resistance may develop to any dewormer, and has been reported for most classes of dewormers.

Fecal examinations or other diagnostic tests and parasite management history should be used to determine if the product is appropriate for the herd/flock, prior to the use of any dewormer. Following the use of any dewormer, effectiveness of treatment should be monitored (for example, with the use of a fecal egg count reduction test or another appropriate method).

A decrease in a drug's effectiveness over time as calculated by fecal egg count reduction tests may indicate the development of resistance to the dewormer administered. Your parasite management plan should be adjusted accordingly based on regular monitoring.

Macrocyclic lactones provide prolonged drug exposure that may increase selection pressure for resistant parasites. This effect may be more pronounced in extended-release formulations.

TARGET ANIMAL SAFETY

Not for use in bulls, as reproductive safety testing has not been conducted in males intended for breeding or actively breeding. Not for use in calves less than 3 months of age because safety testing has not been conducted in calves less than 3 months of age.

STORAGE

Store at 77° F (25° C) with excursions between 59° and 86° F (15° and 30° C). Protect from light. This information is not comprehensive. Consult your veterinarian for more information. Visit <https://bi-animalhealth.com/cattle/products/longrange> for the FDA approved product label.

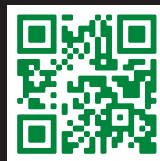
Approved by FDA under NADA # 141-327  
Marketed by: Boehringer Ingelheim Animal Health USA Inc., Duluth, GA 30096  
The Cattle Head Logo® and LONGRANGE® are registered trademarks of Boehringer Ingelheim Animal Health USA Inc.  
© 2022 Boehringer Ingelheim Animal Health USA Inc. All rights reserved.  
1050-2889-99, Rev. 07/2022, 8LDN016F US-BOV-0173-2023A-V2



INVESTING IN LONGRANGE® [EPRINOMECTIN]  
DOESN'T JUST TIP THE SCALES IN YOUR FAVOR.  
**IT DARN NEAR  
BREAKS THEM.**

Getting more from your dewormer starts with a proven investment. LONGRANGE is the first and only dewormer that provides up to 150 days of parasite control.<sup>1</sup> It's how top producers help their herds pack on the pounds, and in turn, bank more bucks. LONGRANGE is the difference between being average and being at the top of your game. So, next time you're deworming cattle, don't just get the job done. **Get it outdoors.**

PROVEN TO PAY OFF IN  
POUNDS AND DOLLARS.  
CALCULATE THE RETURN  
FOR YOUR HERD.



longrangecalculator.com

**OUTLAST. OUTPERFORM. OUTDO.**

**LONGRANGE IMPORTANT SAFETY INFORMATION:** Do not treat within 48 days of slaughter. Not for use in female dairy cattle 20 months of age or older, including dry dairy cows, or in veal calves. Post-injection site damage (e.g., granulomas, necrosis) can occur. These reactions have disappeared without treatment. Not for use in breeding bulls, or in calves less than 3 months of age. Not for use in cattle managed in feedlots or under intensive rotational grazing. Pregnant women should wear gloves and exercise caution or avoid handling this product.

<sup>1</sup> Dependent upon parasite species, as referenced in FOI summary and LONGRANGE product label.