

Lower Middle Tennessee Cattle Association

VIDEO BOARD SALE

Friday, September 6, 2024
9 a.m. CST

UPI — Columbia

1231 Industrial Park Rd., Columbia, TN

View the catalog
at uproducers.com



Bid online
at lmauctions.com



Sale management provided by:

United
 **Producers, Inc.**



**WELCOME TO THE
LOWER MIDDLE TENNESSEE CATTLE ASSOCIATION
*VIDEO BOARD SALE***

September 6, 2024

THIS OFFERING INCLUDES:

1890 STEERS

495 HEIFERS

2,385 TOTAL HEAD OFFERED

**** AUCTIONEER **:**

Joe McKee

Lebanon, TN

Sale starts at **9 AM CST** at the **Columbia Livestock Center:**

1231 Industrial Park Road

Columbia, TN

Please contact the office at (931) 223-8323 prior to the sale to reserve your line.

SALE BROADCAST LIVE AT www.lmaauctions.com

For more information contact:

Dennis Wentzel
President, LMTCA

Richard Brown
(931) 239-9785

Frank Poling
UPI
(931) 212-9962

Josh Woodward
UPI
(931) 703-9090

LOWER MIDDLE TENNESSEE CATTLE ASSOCIATION
VIDEO BOARD SALE
Management: United Producers, Inc.

TERMS AND CONDITIONS

GENERAL

1. By Participating in the auction, buyers and sellers expressly agree to adhere to the Terms and Conditions set forth herein and to the provisions set forth in the Video Cattle Marketing Contract.
2. Terms and Conditions of the sale are printed in sale catalog; however, announcements from the auction block take precedence over printed material.
3. All buyers and sellers who are not present at auction but who participate in the auction by any means shall be deemed to have authorized United Producers, Inc. to sign the Video Cattle Marketing Contract on their behalf.
4. Cattle are graded and identified as to breed, muscle score, frame size and flesh.
5. Cattle are available for viewing the week of the sale. Buyers wanting to see any lots should call United Producers, Inc. to schedule.

PRICE SLIDE

Based on advice from USDA Market News Service and/or U.T. Extension, the recommended price slide will be listed on each lot sold. Every effort has been made to give our best estimate on all weights.

Unless otherwise stated in individual lot sale conditions, Cattle 50 pounds or less over base weight will slide heavy side only at listed price slide.

Cattle will have a 50 lbs. weight stop unless otherwise noted.

WEIGHTS AND WEIGHING INFO

1. All weights given are best estimates as determined by United Producers, Inc. personnel, and consignor. Every effort has been made to be accurate; however, **no guarantee is offered on the estimated weight or range.**
2. **A 36 HOUR NOTICE IS REQUIRED FROM BUYER TO UNITED PRODUCERS, INC. TO LOAD CATTLE.** Cattle will be delivered per weighing conditions described in the catalog for each lot. Sellers will deliver all cattle consigned unless prevented from doing so by reasons beyond their control.
3. Unless otherwise stated or negotiated, Cattle must be picked up within 10 days of the sale date. Sundays are not available for delivery. All scheduled weighings are to be arranged through United Producers, Inc. with proper notice.
4. Cattle will be weighed and loaded by United Producers, Inc. employees or representatives. United Producers, Inc. will cut out any blemished or unmerchantable cattle with agreement of buyer and seller. Cattle will be weighed when all consigned cattle are at the scales or per catalog write-up if different.

OPEN HEIFERS

Unless otherwise provided in writing, heifers sold **are not** guaranteed open.

PREGNANCY CHECKING OF HEIFERS

Sellers may, at their discretion, allow a buyer to have the heifers they are purchasing pregnancy checked. If heifers are pregnancy checked, they must be checked at the Seller's Farm or at one of UPI's shipment facilities. Otherwise, buyer accepts heifers "as is".

NO SALES

Seller reserves the right to reject bids. In the event of a "NO SALE," the last bidder will be paid \$1.00 (one dollar) per head by the marketing agency, and the seller will be charged a fee of \$3.00 (three dollars) per head.

BINDER FEE

United Producers, Inc. retains the authority to charge the buyer a binder fee of up to \$50.00 per head for each lot bought and to apply toward purchase of said lot, due upon request by United Producers, Inc. Buyers present at sale may pay this fee at the close of sale. Others may pay this fee within 3 days of the applicable sale date. A failure to pay the required binder fee will be considered a default.

SETTLEMENT

All sales are due and payable immediately upon weighing of livestock and receipt of invoice. It is further expressly intended, understood, and agreed that this is a cash transaction.

TITLE AND LIABILITY

1. Title and ownership of the cattle do not transfer to buyer, notwithstanding delivery or possession, until the purchase price is paid in full and all funds are collected.
2. Liability for loss of the cattle transfers to buyer at the time cattle are weighed or loaded onto truck whichever occurs first.

WARRANTIES

The parties expressly agree that there are no warranties express or implied on any cattle listed or sold. All cattle are sold "as is."

DEFAULT

In case of failure to perform any term or condition in the agreement by either buyer or seller, the defaulting party shall be liable for actual and incidental damages as permitted by law, plus court costs and reasonable attorney fees, as well as any other available relief. Default in payment shall include: 1.) Failure to receive full and final payment; 2.) Default of instrument given in payment; 3.) Death, bankruptcy or insolvency of buyer. Upon default, United Producers, Inc., with or without notice, may impose all rights afforded by law. The laws of the State of Tennessee shall govern.

FLESH SCORES

1	Thin -	4	Medium -	7	Fleshy -
2	Thin	5	Medium	8	Fleshy
3	Thin +	6	Medium +	9	Fleshy +

COMMISSION & BEEF CHECKOFF

Seller's Commission and Marketing fees are established by Lower Middle Tennessee Cattle Association in conjunction with United Producers, Inc. and will be charged on each lot. Additionally, \$1.00 per head will be deducted from seller for National Beef Checkoff and \$.50 per head for Tennessee State Beef Checkoff. (TN Beef Checkoff is a volunteer checkoff. All markets are required by law to deduct. A refund option is available through the Tennessee Department of Agriculture.)

INSURANCE

Livestock Insurance on all sold livestock will be deducted from seller's proceeds at an established rate by the carrier to cover accidental death or injury at time of weigh up and load out.

ANIMAL DISEASE TRACEABILITY LAWS

Beginning January 1, 2015, all livestock moved out of the state of origin must be accompanied by a Certificate of Health Inspection from an accredited veterinarian. It shall be the **Buyer's responsibility** to furnish necessary information at least 3 days prior to weigh up in order to obtain a certificate from the Seller. It shall then be the **Seller's responsibility** to provide the certificate or the information necessary to secure a certificate from the veterinarian.

UPI VIDEO SALE REPRESENTATIVES

Please contact one of our representatives for assistance.

- GENERAL OFFICE 931-223-8323
- FRANK POLING 931-212-9962
- RICHARD BROWN 931-239-9785
- JIMMY JENNINGS 931-993-6817
- JOSH WOODWARD 931-703-9090
- BRIAN LOVELL 502-381-7984
- JONATHAN TREW 423-584-9976
- ROGER UPTON 931-309-8798

Sale Management provided by:



September 6, 2024

LOT#	SELLER	HEAD	AVG WT	
24-156	Jimmy or Randall Mann	20	675	Steers
24-157	2Z Cattle	100+	700	Steers
24-158	Graff/Reid/Lee/Dixon	74	700	Steers
24-159	Donald Jernigan/Alvin Brandon	40+/-	700	Steers
24-160	Bill Thrasher	45	730	Steers
24-161	Travis Holsomback/Steve Bass	82	750	Steers
24-162	J Brinkley Farm	70	760	Steers
24-163	Jack Gilbert	70	800	Steers
24-164	Caleb Davis/Davhil Farm	64	800	Steers
24-165	Andy Leonard	27	800	Steers
24-166	Graff/Reid/Lee/Dixon	63	810	Steers
24-167	Bill Dixon	65	825	Steers
24-168	Wilhelm Farms	58	825	Steers
24-169	Andrew Griffith	70+	825	Steers
24-170	Joe Sommers	58	835	Steers
24-171	Donna Jo Curtis	59	835	Steers
24-172	Heritage Livestock	130	850	Steers
24-173	Andrew Massey	125	850	Steers
24-174	Houston Dorris	62	850	Steers
24-175	Donald Jernigan/Alvin Brandon	60	850	Steers
24-176	Worley Farms	61	875	Steers
24-177	Ward Pack	60	880	Steers
24-178	Ray Farms	68	890	Steers

Sale Management provided by:



September 6, 2024

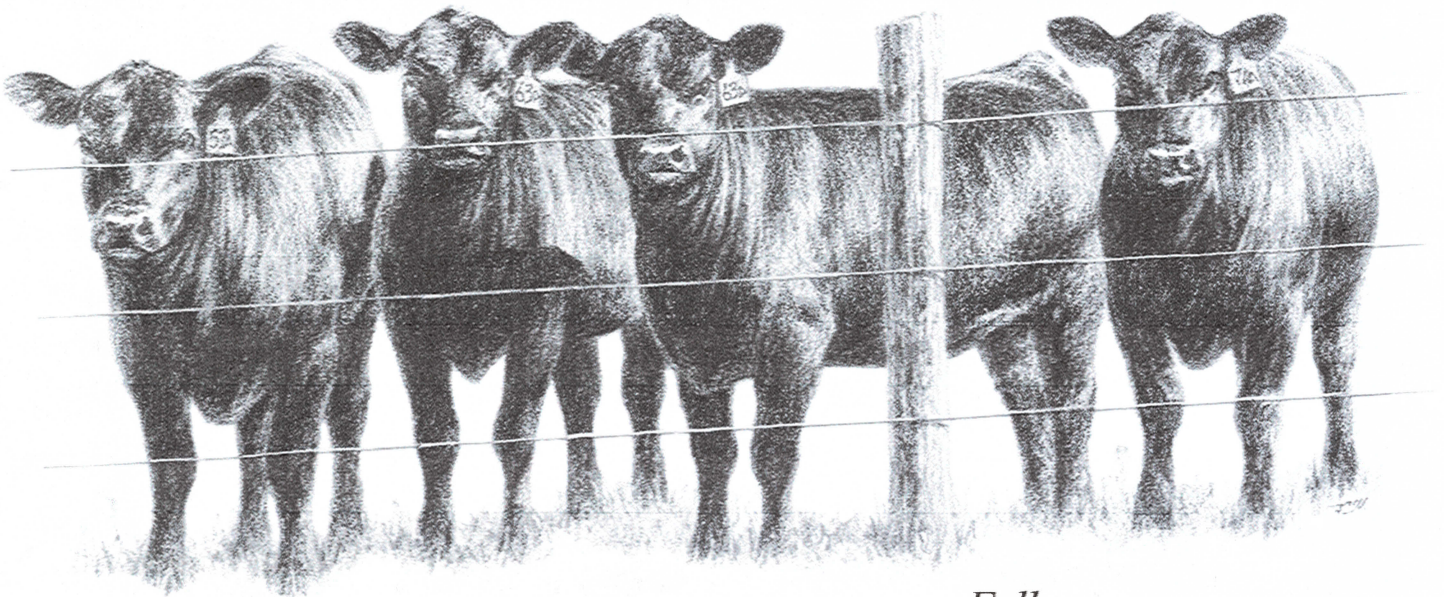
LOT#	SELLER	HEAD	AVG WT	
24-179	Ray Farms	60	900	Steers
24-180	Ben Jenkins	58	900	Steers
24-181	Wilhelm Farms	60	900	Steers
24-182	Roger Upton	56	925	Steers
24-183	Ray Farms	65	930	Steers
24-184	West Farms	60	975	Steers
24-185	Travis Holsomback/Steve Bass	88	650	Heifers
24-186	Donald Jernigan/Alvin Brandon	64+/-	680	Heifers
24-187	Turner McKay	28	690	Heifers
24-188	Jimmy or Randall Mann	25	700	Heifers
24-189	Dacosta & Fuller	75	725	Heifers
24-190	Andy Leonard	23	725	Heifers
24-191	Burton Farms	66	765	Heifers
24-192	Joe Sommers	61	795	Heifers
24-193	West Farms	65	835	Heifers



Have all your animal health needs
delivered directly to your door...

From Antibiotics and Vaccines to Ear Tags and Wormers

If your cattle need it, we can provide it.



Contact Us Today at 888-699-5088
www.performance-feeds.com

Follow us on



BEFORE YOU SEND THEM OFF, MAKE SURE THEY'RE PROTECTED.

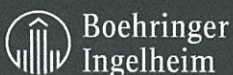
Use Pyramid® 5 + Presponse® SQ, the only vaccine
labeled to protect against BVD 1b.



PREVENTION WORKS.

It's time to go back to school on protecting your calves from respiratory disease. With BVD 1b increasingly prevalent in calves, make PYRAMID 5 + PRESPONSE SQ a part of your preconditioning routine this fall. With the broadest overall protection, PYRAMID 5 + PRESPONSE SQ ensures that your calves are being protected against BVD Type 1, Type 1b and Type 2, along with IBR, BRSV, PI₃ and *M. haemolytica*. So, make sure you have another successful year by contacting your Boehringer Ingelheim Vetmedica, Inc. representative today.

Learn more at bi-vetmedica.com/cattle.



Prevention Works does not imply prevention label claims for use of a vaccine/vaccines.
PYRAMID and PRESPONSE are registered trademarks of Boehringer Ingelheim Vetmedica, Inc.
©2015 Boehringer Ingelheim Vetmedica, Inc. BIVI/PYPR/151047.

PYRAMID® 5
+ PRESPONSE® SQ

Lot 24-156

OWNER: Jimmy or Randall Mann
Kelso TN

BQA #:
HEAD: 20 Steers
EST. AVG. WEIGHT: 675
EST. WEIGHT RANGE: 575-775
USDA GRADES: 90% L-1 & M-1 10% L-2 & M-2
FLESH #: 5

DESCRIPTION:
18 Black, 1 Red, 1 Char X
1 hd with ¼ ear

Weaned June 13, 2024. Home Raised by Angus bulls.

MANAGEMENT:
Cattle are on pasture and 9# per head per day of
Commodity blend feed plus mineral with fly control.

2 shots each in neck— Virashield 6, Bar-Vac 7/Somnus,
Pinkeye

Dewormed with Eprinex. No implants.

CONDITIONS:
Cattle will be penned by 7:00 AM morning of weigh up in a
dry lot. Hauled 9 miles to UPI Fayetteville Livestock Center
by 9:00 AM and weighed on the ground with a 2% shrink.

TAKE ALL

Available September 9th, 11th—16th

UPI REPRESENTATIVE: Frank Poling

SLIDE: Up Only: 10 Cents



PRICE/CWT: _____

BUYER: _____

Lot 24-157

OWNER: 2Z Cattle
Culleoka TN

BQA #:
HEAD: 100+ Steers
EST. AVG. WEIGHT: 700
EST. WEIGHT RANGE: 650-775
USDA GRADES: 90% L-1 & M-1 10% L-2 & M-2
FLESH #: 4

DESCRIPTION:
100% Black & BB

Cattle put together 120+ days.

Few with Pinkeye scars.

MANAGEMENT:
Cattle are on pasture and hay plus 5# per head per day of
a Commodity blend feed and free choice mineral.

2 shots each in neck— Alpha 7, Bovishield Gold,
Multimin 90

Dewormed with Synanthic and Cydectin Injectable. No
implants.

CONDITIONS:
Cattle will be penned by 7:00 AM morning of weigh up in a
dry lot. Weighed on the ground at farm's scales with a
2% shrink.

TAKE 48,000-50,000# LOAD OFF HEAVY END

Available September 9th—11th

UPI REPRESENTATIVE: Frank Poling

SLIDE: Up Only: 10 Cents



PRICE/CWT: _____

BUYER: _____

Lot 24-158

OWNER: Graff/Reid/Lee/Dixon
Livingston TN



BQA #: TN #1996

HEAD: 74 Steers

EST. AVG. WEIGHT: 700

EST. WEIGHT RANGE: 650-775

USDA GRADES: 90% L-1 & M-1 10% L-2 & M-2

FLESH #: 5

DESCRIPTION:

100% Black & BB (Option on 1 steer with extra white)

Weaned 60-90+ days. Home Raised by Angus or Hereford bulls.

CATTLE ARE NOT RUNNING TOGETHER

MANAGEMENT:

Cattle are on pasture plus 12% Commodity blend feed and free choice mineral with Rumensin.

2 shots each in neck—Bar-Vac 7/Somnus or Ultrabac 7/
Somnus or Alpha 7

1 shot each in neck—Pyramid 5 + Prespense SQ
(Boostered with Pyramid 5) or Bovishield Gold 5
(Boostered with Bovishield Gold 5)

Dewormed with Dectomax or Cydectin.

CONDITIONS:

Cattle will be penned by 7:00 AM morning of weigh up in a dry lot. Hauled 20 miles to Bilbrey Bros Livestock in Cookeville by 10:00 AM and weighed on the ground with a 2% shrink.

TAKE 48,000-50,000# LOAD OFF HEAVY END

Available September 9th—10th, 12th—13th

UPI REPRESENTATIVE: Richard Brown

SLIDE: Up Only: 10 Cents



PRICE/CWT: _____

BUYER: _____

Lot 24-159

OWNER: Donald Jernigan/Alvin Brandon
Christiana/Bradyville TN



BQA #: TN #1849/#16522

HEAD: 40+/- Steers

EST. AVG. WEIGHT: 700

EST. WEIGHT RANGE: 625-775

USDA GRADES: 90% L-1 & M-1 10% L-2 & M-2

FLESH #: 5

DESCRIPTION:

100% Black & BB

Weaned July 2024. Home Raised by Angus bulls.
Disposition is excellent.

CATTLE ARE NOT RUNNING TOGETHER

MANAGEMENT:

Cattle are on pasture and hay plus 8# per head per day of Co-op 14% Commodity blend feed or 15% Maximizer and free choice mineral with Rumensin.

2 shots each in neck— Bar-Vac 7/Somnus, Pyramid 5 +
Prespense SQ



Dewormed with Eprinex.

CONDITIONS:

Cattle will be penned by 7:00 AM morning of weigh up in a dry lot. Hauled 20 miles to Gilmore Livestock by 10:00 AM and weighed on the ground with a 1% shrink.

TAKE ALL

Available September 16th—17th, 19th—20th

UPI REPRESENTATIVE: Richard Brown

SLIDE: Up Only: 10 Cents



PRICE/CWT: _____

BUYER: _____

Lot 24-160

OWNER: Bill Thrasher
Culleoka TN



BQA #: TN #20818

HEAD: 45 Steers

EST. AVG. WEIGHT: 730

EST. WEIGHT RANGE: 675-825

USDA GRADES: 95% L-1 & M-1 5% L-2 & M-2

FLESH #: 5

DESCRIPTION:

35 Black & BB, 4 Red & RB, 6 Char X
10% with 1/8 ear

Weaned May 15, 2024. Home Raised by Registered Angus or Hereford bulls.

PI NEGATIVE

MANAGEMENT:

Cattle are on pasture and 8# per head per day of 14% Coarse feed plus mineral.

2 shots each in neck — Alpha 7 MB-1, Express 5 HS

1 shot each in neck—Presponse HM

Dewormed with Cydectin. Implanted with Ralgro on June 1, 2024

CONDITIONS:

Cattle will be penned by 7:00 AM morning of weigh up in a dry lot. Hauled 18 miles to UPI Columbia Livestock Center by 9:00 AM and weigh on ground with a 1% shrink.

TAKE ALL

Available September 10th, 12th—16th

UPI REPRESENTATIVE: Frank Poling

SLIDE: Up Only: 8 Cents



PRICE/CWT: _____

BUYER: _____

Lot 24-161

OWNER: Travis Holsomback/Steve Bass
Resaca GA

BQA #:

HEAD: 82 Steers

EST. AVG. WEIGHT: 750

EST. WEIGHT RANGE: 700-800

USDA GRADES: 90% L-1 & M-1 10% L-2 & M-2

FLESH #: 5

DESCRIPTION:

50% Black & BB, 50% Char X
5 hd with 1/8 ear

Cattle are not weaned. Home Raised by Angus bulls.

Skunk tail will not be included on load.

MANAGEMENT:

Cattle are on pasture and hay plus Flemming Summer Grazing mineral.

1 shot each in neck-- Pyramid 5 + Presponse, BarVac 7

Dewormed with Longrange. Implanted with Ralgro on March 1, 2024. Castrated with knife.

CONDITIONS:

Cattle will be penned by daylight on the morning of weigh up. Hauled to loading barn to be sorted and will be weighed starting 3:00 PM on the farm's certified scales straight.

TAKE 48,000-50,000# LOAD OFF HEAVY END

Available November 4th—15th

MUST LOAD SAME DAY AS LOT 24-185

UPI REPRESENTATIVE: Jonathan Trew

SLIDE: Up Only: 10 Cents



PRICE/CWT: _____

BUYER: _____

Lot 24-162

OWNER: J Brinkley Farm
Shelbyville TN
BQA #: TN #17277
HEAD: 70 Steers
EST. AVG. WEIGHT: 760
EST. WEIGHT RANGE: 725-900
USDA GRADES: 95% L-1 & M-1 5% L-2 & M-2
FLESH #: 5

DESCRIPTION:
68 Black & BB, 1 RB, 1 Char X

Weaned May 2024. Home Raised by Angus or Horned Hereford bulls.

MANAGEMENT:
Cattle are on pasture and hay plus 8# per head per day of Ogle 14% Beef Grower and all-purpose mineral with Rumensin.

2 shots each in neck— Express 5, Virashield 5, BarVac7/Somnus

Dewormed with Ivomec Plus. Castrated with a knife.

CONDITIONS:
Cattle will be penned by 7:00 AM morning of weigh up in a dry lot. Buyers truck get tare wt by 7:30 AM and travel 15 miles to farm, load and haul to Jack Daniels Distillery and weigh on truck with a 2% shrink.

TAKE 48,000-50,000# LOAD OFF HEAVY END

Available September 9th, 11th—16th

Truck must weigh on a 70' scale - NO SPLIT WEIGHING

UPI REPRESENTATIVE: Jimmy Jennings

SLIDE: Up Only: 10 Cents



PRICE/CWT: _____

BUYER: _____

Lot 24-163

OWNER: Jack Gilbert
Elkmont AL
BQA #: AL #10087
HEAD: 70 Steers
EST. AVG. WEIGHT: 800
EST. WEIGHT RANGE: 725-875
USDA GRADES: 100% L-1 & M-1
FLESH #: 5

DESCRIPTION:
68 Black & BB, 2 Char X

Weaned July 21, 2024. Home Raised by Angus or Sim-Angus bulls.

MANAGEMENT:
Cattle are on pasture plus 8-10# per head per day of 50% soyhull pellets, 25% DDG and 25% cracked corn plus Browns Valley custom blend mineral with Bovatec.

2 shots each in neck—BarVac 7/Somnus

1 shot each in neck—Pyramid 5 + Presponse, Pyramid 5

Dewormed with Eprinex. Implanted with Ralgro in March 2024. Castrated with knife.

CONDITIONS:
Cattle will be penned by 7:00 AM morning of weigh up in a dry lot. Hauled 4 miles on gooseneck to buyer's truck by 8:00 AM. Buyer's truck get tare wt by 7:00 AM and travel 30 miles to farm, load and haul to Pilot Truck Stop, I-65, Exit 22 and weigh on the truck with a 1% shrink.

TAKE 48,000-50,000# LOAD OFF HEAVY END

Available September 9th—16th

UPI REPRESENTATIVE: Frank Poling

SLIDE: Up Only: 9 Cents



PRICE/CWT: _____

BUYER: _____

Lot 24-164

OWNER: Caleb Davis/Davhil Farm
Shelbyville TN
BQA #: TN #5062
HEAD: 64 Steers
EST. AVG. WEIGHT: 800
EST. WEIGHT RANGE: 700-900
USDA GRADES: 90% L-1 & M-1 & 10% L-1 & M-1
FLESH #: 5

DESCRIPTION:
100% Black & BB

Weaned prior to June 1, 2024. 80% Home Raised by Angus bulls.

CATTLE ARE NOT RUNNING TOGETHER.

MANAGEMENT:

Cattle are on pasture and hay plus 8-10# per head per day of Co-op 14% Commodity blend feed with Rumensin and free choice Co-op mineral.

2 shots each in neck—Express 5 HS, Covexin 8 or Bovishield Gold, Ultrabac/Somnus

Dewormed with Eprinex Pour On. No implants.

CONDITIONS:

Cattle will be penned by 7:00 AM morning of weigh up in a dry lot. Hauled 12 miles to Gilmore Livestock by 9:00 AM and weighed on the ground with a 1% shrink.

TAKE 48,000-50,000# LOAD OFF HEAVY END

Available September 16th—18th

UPI REPRESENTATIVE: Richard Brown

SLIDE: Up Only: 9 Cents



PRICE/CWT: _____

BUYER: _____

Lot 24-165

OWNER: Andy Leonard
Christiana TN
BQA #:
HEAD: 27 Steers
EST. AVG. WEIGHT: 800
EST. WEIGHT RANGE: 725-925 (Includes 1 950# Steer)
USDA GRADES: 95% L-1 & M-1 5% L-2 & M-2
FLESH #: 5

DESCRIPTION:
100% Black & BB
Includes 1 steer with extra sheath

Weaned July 1, 2024. Home Raised by Angus bulls.

MANAGEMENT:

Cattle are on pasture and hay plus 12# per head per day of Co-op 16% Commodity blend feed with mineral.

2 shots each in neck— Bar-Vac 7/Somnus, Pyramid 5 + Presponse SQ

Dewormed with Dectomax Injectable.

CONDITIONS:

Cattle will be penned by 7:00 AM morning of weigh up in a dry lot. Hauled 10 miles to Gilmore Livestock and weighed on the ground with a 1% shrink.

TAKE ALL

Available September 9th—13th

UPI REPRESENTATIVE: Richard Brown

SLIDE: Up Only: 9 Cents



PRICE/CWT: _____

BUYER: _____

Lot 24-166

OWNER: Graff/Reid/Lee/Dixon
Livingston TN



BQA #: TN #1996/#3823
HEAD: 63 Steers
EST. AVG. WEIGHT: 810
EST. WEIGHT RANGE: 775-950
USDA GRADES: 95% L-1 & M-1 5% L-2 & M-2
FLESH #: 5

DESCRIPTION:
100% Black & BB
Includes 1 steer with extra sheath

Weaned 60-90+ days. Home Raised by Angus or Hereford bulls.

CATTLE ARE NOT RUNNING TOGETHER

MANAGEMENT:
Cattle are on pasture plus 12% Commodity blend feed and free choice mineral with Rumensin.

2 shots each in neck—Bar-Vac 7/Somnus or Ultrabac 7/
Somnus or Alpha 7

1 shot each in neck—Pyramid 5 + Presponse SQ
(Boostered with Pyramid 5) or Bovishield Gold 5
(Boostered with Bovishield Gold 5)

Dewormed with Dectomax or Cydectin.

CONDITIONS:
Cattle will be penned by 7:00 AM morning of weigh up in a dry lot. Hauled 20 miles to Bilbrey Bros Livestock in Cookeville by 10:00 AM and weighed on the ground with a 2% shrink.

TAKE 48,000-50,000# LOAD OFF HEAVY END

Available September 9th—10th, 12th—13th

MUST LOAD BEFORE LOT 24-158

UPI REPRESENTATIVE: Richard Brown

SLIDE: Up Only: 9 Cents



PRICE/CWT: _____

BUYER: _____

Lot 24-167

OWNER: Bill Dixon
Lawrenceburg TN

BQA #:
HEAD: 65 Steers
EST. AVG. WEIGHT: 825
EST. WEIGHT RANGE: 725-875
USDA GRADES: 90% L-1 & M-1 10% L-2 & M-2
FLESH #: 4 & 5

DESCRIPTION:
59 Black & BB, 2 RB, 4 Char X

Cattle put together in February 2024.

MANAGEMENT:
Cattle are on pasture plus 6# per head per day ground ear corn with mineral.

1 shot each in neck— Bovishield Gold, 7-way Blackleg

Dewormed with Dectomax. No implants.

CONDITIONS:
Cattle will be penned by 7:00 AM morning of weigh up in a dry lot. Buyers truck will get tare wt by 7:00 AM and travel 7 miles to the farm, load and haul to Roger's Group Lawrenceburg and weighed on the truck with a 2% shrink.

TAKE 48,000-50,000# LOAD OFF HEAVY END

Available September 9th—16th

UPI REPRESENTATIVE: Frank Poling

SLIDE: Up Only: 9 Cents



PRICE/CWT: _____

BUYER: _____

Lot 24-168

OWNER: Wilhelm Farms
Shelbyville TN

BQA #:
HEAD: 58 Steers
EST. AVG. WEIGHT: 825
EST. WEIGHT RANGE: 750-900
USDA GRADES: 85% L-1 & M-1 15% L-2 & M-2
FLESH #: 5 few 4

DESCRIPTION:
47 Black & BB, 6 Red, RB, Char & Char X, 4 Herefords,
1 Lineback
2-3 hd with ¼ ear or less

Cattle put together 90+ days.

MANAGEMENT:
Cattle are on pasture, hay, and free choice distillage with mineral.

2 shots each in neck—Covexin 8, Bovishield Gold, Boostered with Bovishield Gold One Shot

1 shot each in neck— Vista Once

Dewormed with Safeguard and Ivomec Pour-On.

CONDITIONS:
Cattle will be penned by 7:00 AM morning of weigh up in a dry lot. Buyers truck get tare wt by 7:00 AM and travel 30 miles to farm, load and haul to Love’s TS, Exit 46, off I-65, and weigh on the truck with a 2% shrink.

TAKE 48,000-50,000# LOAD OFF HEAVY END

Available September 9th—16th

UPI REPRESENTATIVE: Frank Poling

SLIDE: Up Only: 9 Cents



PRICE/CWT: _____

BUYER: _____

Lot 24-169

OWNER: Andrew Griffith
Hampshire TN

BQA #:
HEAD: 70+ Steers
EST. AVG. WEIGHT: 825
EST. WEIGHT RANGE: 750-900
USDA GRADES: 85% L-1 & M-1 15% L-2 & M-2
FLESH #: 4

DESCRIPTION:
90% Black & BB, 10% Red, RB, Char, & Char X
2-3 hd show ¼ ear

Cattle put together in Winter of 2023.

1 steer with 6” tipped horns.

MANAGEMENT:
Cattle are on pasture plus 5# per head per day of Commodity mix feed with mineral.

1 shot each in neck— Pyramid 5 + Presponse, BarVac 7+ Somnus

Dewormed with Safeguard. Implanted with Synovex One Grower.

CONDITIONS:
Cattle will be penned by 7:00 AM morning of weigh up in a dry lot. Hauled 18 miles to UPI Columbia Livestock Center by 9:00 AM and weighed on ground with a 1% shrink.

TAKE 48,000-50,000# LOAD OFF HEAVY END

Available September 10th, 12th—16th

UPI REPRESENTATIVE: Frank Poling

SLIDE: Up Only: 9 Cents



PRICE/CWT: _____

BUYER: _____

Lot 24-170

OWNER: Joe Sommers
McMinnville TN

BQA #:
HEAD: 58 Steers
EST. AVG. WEIGHT: 835
EST. WEIGHT RANGE: 690-890
USDA GRADES: 90% L-1 & M-1 & 10% L-1 & M-1
FLESH #: 5

DESCRIPTION:

100% Black

Weaned July 15, 2024. Home Raised by Angus bulls.

MANAGEMENT:

Cattle are on pasture and 6# per head per day of ground corn, DDG, and haylage.

1 shot each in neck—Pyramid 5 + Presponse SQ, Vision 7

Dewormed with Longrange. Castrated with knife.

CONDITIONS:

Cattle will be penned by 7:00 AM morning of weigh up in a dry lot. Hauled 4 miles on gooseneck to buyer's truck by 8:00 AM. Buyer's truck get tare wt by 7:00 AM and travel 30 miles to farm, load and haul to Pilot Truck Stop, I-65, Exit 22 and weigh on the truck with a 1% shrink.

TAKE 48,000-50,000# LOAD OFF HEAVY END

Available September 9th—16th

UPI REPRESENTATIVE: Jonathan Trew

SLIDE: Up Only: 9 Cents



PRICE/CWT: _____

BUYER: _____

Lot 24-171

OWNER: Donna Jo Curtis
Athens AL



BQA #: AL #44-10349
HEAD: 59 Steers
EST. AVG. WEIGHT: 835
EST. WEIGHT RANGE: 750-900
USDA GRADES: 90% L-1 & M-1 & 10% L-1 & M-1
FLESH #: 5

DESCRIPTION:

57 Black & BB, 1 RB, 1 Hereford
10% with 1/8 or less ear

Weaned July 4, 2024. Home Raised by Angus or Hereford bulls.

MANAGEMENT:

Cattle are on pasture and hay plus 8# per head per day of 14% Co-op/CPC Developer feed and Purina All-Season mineral.

2 shots in neck—Express 5 HS

1 shot each in neck—Pyramid 5 + Presponse, Alpha 7

Dewormed with Eprinex. Implanted with Ralgro. Castrated with knife.

CONDITIONS:

Cattle will be penned by 7:00 AM morning of weigh up in a dry lot. Hauled 10 miles by gooseneck and loaded onto Buyer's truck. Buyer's truck get tare wt by 7:30 AM and travel 30 miles to farm, load and haul to Pilot off I-65, Exit 22 and weighed on truck with a 1% shrink.

TAKE 48,000-50,000# LOAD OFF HEAVY END

Available September 9th or 18th—20th

UPI REPRESENTATIVE: Jimmy Jennings

SLIDE: Up Only: 9 Cents



PRICE/CWT: _____

BUYER: _____

Lot 24-172

OWNER: Heritage Livestock
Bowling Green KY

BQA #:
HEAD: 130 Steers
EST. AVG. WEIGHT: 850
EST. WEIGHT RANGE: 800-900
USDA GRADES: 90% L-1 & M-1 10% L-2 & M-2
FLESH #: 5

DESCRIPTION:
100% Black & BB
5% with 1/8 ear

Cattle put together since May 2024.

PI NEGATIVE

MANAGEMENT:
Cattle are on pasture plus 18# per head per day of a TMR.

1 shot each in neck— Vision 7, Titanium 3, ENDOVAC-Beef

Dewormed with Cydectin. Implanted with Component TE-G.

CONDITIONS:
Cattle will be penned by 7:00 AM morning of weigh up in a dry lot. Weighed at Heritage Livestock on the ground with a 2% shrink.

TAKE 2/48,000-50,000# LOAD OFF HEAVY END

Available September 10th–12th —Seller’s Option

UPI REPRESENTATIVE: Frank Poling

SLIDE: Up Only: 8 Cents



PRICE/CWT: _____

BUYER: _____

Lot 24-173

OWNER: Andrew Massey
Mt Pleasant TN

BQA #:
HEAD: 125 Steers
EST. AVG. WEIGHT: 850
EST. WEIGHT RANGE: 750-900
USDA GRADES: 90% L-1 & M-1 10% L-2 & M-2
FLESH #: 4

DESCRIPTION:
114 Black & BB, 6 RB, 4 Char X, 1 Hereford

Cattle put together since April 2024.

MANAGEMENT:
Cattle are on pasture plus Co-op 14% Commodity blend feed a couple of times a week and Purina Wind and Rain Hi-Mag mineral with Altosid.

2 shots each in neck – Bar-Vac 7/Somnus

1 shot each in neck—Pyramid 5 + Presponse SQ, Boosetered with Pyramid 5

Dewormed with Longrange and Synanthic. Treated with Protectus Pour On Insecticide IGR and Arovyn at first round of processing.

CONDITIONS:
Cattle will be penned by 7:00 AM morning of weigh up in a dry lot. Hauled approx. 15 miles to UPI Columbia Livestock Center by 9:00 AM and weighed on the ground with a 1% shrink.

TAKE 2/48,000-50,000# LOAD OFF HEAVY END

Available September 10th, 12th—16th

UPI REPRESENTATIVE: Josh Woodward

SLIDE: Up Only: 9 Cents



PRICE/CWT: _____

BUYER: _____

Lot 24-174

OWNER: Houston Dorris
Milton TN

BQA #:
HEAD: 62 Steers
EST. AVG. WEIGHT: 850
EST. WEIGHT RANGE: 775-900
USDA GRADES: 90% L-1 & M-1 10% L-2 & M-2
FLESH #: 5

DESCRIPTION:
49 Black & BB, 9 Red & RB, 3 Char X, 1 Brindle

Cattle put together 60+ days.

2 steers with warts. 1 steer with blue eye.

MANAGEMENT:
Cattle are on pasture plus 12# per head per day of Co-op
14% Commodity blend feed and free choice mineral.

2 shots each in neck – Bovishield Gold One Shot,
Presponse HM, 7-way Blackleg, ENDOVAC-Beef

Dewormed with Dectomax and Longrange.

CONDITIONS:
Cattle will be penned by 7:00 AM morning of weigh up in a
dry lot. Hauled 18 miles to Alexandria Stockyard by
8:30 AM and weighed on the ground with a 1% shrink.

TAKE 48,000-50,000# LOAD OFF HEAVY END

Available September 9th—16th

UPI REPRESENTATIVE: Frank Poling

SLIDE: Up Only: 9 Cents



PRICE/CWT: _____

BUYER: _____

Lot 24-175

OWNER: Donald Jernigan/Alvin Brandon
Christiana/Bradyville TN



BQA #: TN #1849/#16522
HEAD: 60 Steers
EST. AVG. WEIGHT: 850
EST. WEIGHT RANGE: 800-950
USDA GRADES: 95% L-1 & M-1 5% L-2 & M-2
FLESH #: 5

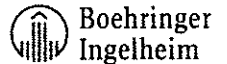
DESCRIPTION:
100% Black & BB

Weaned July 2024. Home Raised by Angus bulls.
Disposition is excellent. Front end sort of Fall steers.

CATTLE ARE NOT RUNNING TOGETHER.

MANAGEMENT:
Cattle are on pasture and hay plus 8# per head per day of
Co-op 14% Commodity blend feed or 15% Maximizer and
free choice mineral with Rumensin.

2 shots each in neck— Bar-Vac 7/Somnus, Pyramid 5 +
Presponse SQ



Dewormed with Eprinex.

CONDITIONS:
Cattle will be penned by 7:00 AM morning of weigh up in a
dry lot. Hauled 20 miles to Gilmore Livestock by 10:00 AM
and weighed on the ground with a 1% shrink.

TAKE 48,000-50,000# LOAD OFF HEAVY END

Available September 9th—10th, 12th—13th

UPI REPRESENTATIVE: Richard Brown

SLIDE: Up Only: 9 Cents



PRICE/CWT: _____

BUYER: _____

Lot 24-176

OWNER: Worley Farms
Hampshire TN

BQA #:
HEAD: 61 Steers
EST. AVG. WEIGHT: 875
EST. WEIGHT RANGE: 800-925
USDA GRADES: 85% L-1 & M-1 15% L-2 & M-2
FLESH #: 4 few 5

DESCRIPTION:
52 Black & BB, 4 Red & RB, 5 Char X
10% with 1/4 ear or less

Cattle put together 90+ days.

1 steer with 3" nubs. 1 steer with few warts.

MANAGEMENT:
Cattle are on pasture plus 3# per head per day of a
Commodity mix feed.

1 shot each in neck—Pyramid 5 + Presponse, Ultrabac 7 +
Somnus

Dewormed with Safeguard in June 2024. Implanted with
Synovex One Grass in January 2024. Castrated with knife.

CONDITIONS:
Cattle will be penned by 7:00 AM on the morning of weigh
up in a dry lot. Hauled 19 miles to UPI Columbia Livestock
Center by 9:00 AM and weighed on ground with a
1% shrink.

TAKE 48,000-50,000# LOAD OFF HEAVY END

Available September 10th, 12th—16th

UPI REPRESENTATIVE: Frank Poling

SLIDE: Up Only: 9 Cents



PRICE/CWT: _____

BUYER: _____

Lot 24-177

OWNER: Ward Pack
Woodbury TN

BQA #:
HEAD: 60 Steers
EST. AVG. WEIGHT: 880
EST. WEIGHT RANGE: 825-925
USDA GRADES: 90% L-1 & M-1 10% L-2 & M-2
FLESH #: 5

DESCRIPTION:
50 Black & BB, 4 Red & RB, 6 Char X
10% with 1/4 ear

Cattle put together as 6 wts.

MANAGEMENT:
Cattle are on pasture plus 10# per head per day of
Commodity mix feed with mineral.

1 shot each in neck—Pyramid 5 + Presponse, Pyramid 5,
Covexin 8

Dewormed with Cydectin. Castrated. Implanted with
Component TE-G.

CONDITIONS:
Cattle will be penned by 7:00 AM morning of weigh up in a
dry lot. Buyers truck get tare wt by 7:00 AM and travel 35
miles to farm, load and haul to Love's TS, I-24, Exit 89 and
weigh on truck with a 2% shrink.

TAKE 48,000-50,000# LOAD OFF HEAVY END

Available September 9th—16th

UPI REPRESENTATIVE: Frank Poling

SLIDE: Up Only: 9 Cents



PRICE/CWT: _____

BUYER: _____

Lot 24-178

OWNER: Ray Farms
Tullahoma TN
BQA #: TN #1715
HEAD: 68 Steers
EST. AVG. WEIGHT: 890
EST. WEIGHT RANGE: 850-950
USDA GRADES: 100% L-1 & M-1
FLESH #: 5 few 6

DESCRIPTION:
100% Black & BB

PI NEGATIVE

MANAGEMENT:

Cattle are on pasture and hay plus wet stillage and 3# per head per day of Co-op pellets stillage booster with ProSolution mineral with Rumensin.

1 shot each in neck—Pyramid 5+Presponse, Pyramid 5, Bar-Vac 7



Dewormed and deloused with Eprinex. Implanted with Component TE-G. Castrated with knife.

CONDITIONS:

Cattle will be penned by 7:00 AM morning of weigh up in a dry lot. Buyers truck get tare wt by 7:00 AM and travel 30 miles to farm, load and haul to Jack Daniels Distillery and weigh on truck with a **2% shrink**. Cattle can be weighed at Exit 114, Truck Plaza in Manchester.

TAKE 48,000-50,000# LOAD OFF HEAVY END

Truck must weigh on a 70' scale - NO SPLIT WEIGHING

Available September 9th—16th

UPI REPRESENTATIVE: Frank Poling

SLIDE: Up Only: 9 Cents



PRICE/CWT: _____

BUYER: _____

Lot 24-179

OWNER: Ray Farms
Tullahoma TN
BQA #: TN #1715
HEAD: 60 Steers
EST. AVG. WEIGHT: 900
EST. WEIGHT RANGE: 850-975
USDA GRADES: 95% L-1 & M-1 5% L-2 & M-2
FLESH #: 5 few 6

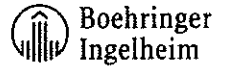
DESCRIPTION:
100% Black & BB

PI NEGATIVE

MANAGEMENT:

Cattle are on pasture and hay plus wet stillage and 3# per head per day of Co-op pellets stillage booster with ProSolution mineral with Rumensin.

1 shot each in neck—Pyramid 5+Presponse, Pyramid 5, Bar-Vac 7



Dewormed and deloused with Eprinex. Implanted with Component TE-G. Castrated with knife.

CONDITIONS:

Cattle will be penned by 7:00 AM morning of weigh up in a dry lot. Buyers truck get tare wt by 7:00 AM and travel 30 miles to farm, load and haul to Jack Daniels Distillery and weigh on truck with a **2% shrink**. Cattle can be weighed at Exit 114, Truck Plaza in Manchester.

TAKE 48,000-50,000# LOAD OFF HEAVY END

Truck must weigh on a 70' scale - NO SPLIT WEIGHING

Available September 9th—16th

UPI REPRESENTATIVE: Frank Poling

SLIDE: Up Only: 8 Cents



PRICE/CWT: _____

BUYER: _____

Lot 24-180

OWNER: Ben Jenkins
Upton KY
BQA #: KY CERTIFIED
HEAD: 58 Steers
EST. AVG. WEIGHT: 900
EST. WEIGHT RANGE: 850-950
USDA GRADES: 90% L-1 & M-1 10% L-2 & M-2
FLESH #: 5

DESCRIPTION:
100% Black & BB

Cattle put together 60+ days.

PI NEGATIVE

MANAGEMENT:

Cattle are on a TMR consisting of hay, hominy, Balancer and wet distillers' grain plus Burkmann's mineral with Rumensin.

2 shots each in neck— Vision 7 SPUR

1 shot each—Nasalgen 3-PMH, Vista 5

Dewormed with Safeguard. Implanted with Revalor IS.
Castrated with knife.

CONDITIONS:

Cattle will be penned by 8:30 AM morning of weigh up in a dry lot. Buyers truck get tare wt by 8:30 AM and travel 10 miles to farm, load and haul to One 9 Truck Stop Cat Scales, Exit 81, I-65, and weigh on the truck with a 2% shrink.

TAKE 48,000-50,000# LOAD OFF HEAVY END

Available September 10th-13th

UPI REPRESENTATIVE: Brian Lovell

SLIDE: Up Only: 8 Cents



PRICE/CWT: _____

BUYER: _____

Lot 24-181

OWNER: Wilhelm Farms
Shelbyville TN
BQA #:
HEAD: 60 Steers
EST. AVG. WEIGHT: 900
EST. WEIGHT RANGE: 825-950
USDA GRADES: 80% L-1 & M-1 20% L-2 & M-2
FLESH #: 5

DESCRIPTION:
80% Black & BB, 20% Red, RB, Char, & Char X
(Includes 2 Herefords)
2-3 hd with ¼ ear

Cattle put together 90+ days.

MANAGEMENT:

Cattle are on pasture, hay, and free choice distillage with mineral.

2 shots each in neck—Covexin 8, Bovishield Gold, Boostered with Bovishield Gold One Shot

1 shot each in neck— Vista Once

Dewormed with Safeguard and Ivomec Pour-On.

CONDITIONS:

Cattle will be penned by 7:00 AM morning of weigh up in a dry lot. Buyers truck get tare wt by 7:00 AM and travel 30 miles to farm, load and haul to Love's TS, Exit 46, off I-65, and weigh on the truck with a 2% shrink.

TAKE 48,000-50,000# LOAD OFF HEAVY END

Available September 9th-16th

UPI REPRESENTATIVE: Frank Poling

SLIDE: Up Only: 8 Cents



PRICE/CWT: _____

BUYER: _____

Lot 24-182

OWNER: Roger Upton
Cornersville TN
BQA #:
HEAD: 56 Steers
EST. AVG. WEIGHT: 925
EST. WEIGHT RANGE: 875-975
USDA GRADES: 90% L-1 & M-1 10% L-2 & M-2
FLESH #: 5

DESCRIPTION:
46 Black & BB, 5 Red & RB, 5 Char X
2 hd with 1/8 ear or less

Cattle put together 90+ days.

2 steers with 4" nubs. Couple with few warts.

MANAGEMENT:
Cattle are on pasture and hay plus 20# per head per day of a Commodity mix TMR.

2 shots each in neck—Pyramid 5, 7-way Blackleg

1 shot each in neck— Multimin 90

Dewormed with Safeguard and Cydectin. Implanted with Revalor-G. Castrated with knife.

CONDITIONS:
Cattle will be penned by 7:00 AM morning of weigh up in a dry lot. Buyers truck get tare wt by 7:00 AM and travel 4 miles to farm, load and haul to Pilot TS, I-65, Exit 22 and weigh on truck with a **2% shrink**.

TAKE 48,000-50,000# LOAD OFF HEAVY END

Available September 9th—16th

UPI REPRESENTATIVE: Frank Poling

SLIDE: Up Only: 8 Cents



PRICE/CWT: _____

BUYER: _____

Lot 24-183

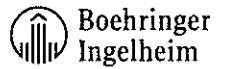
OWNER: Ray Farms
Tullahoma TN
BQA #: TN #1715
HEAD: 65 Steers
EST. AVG. WEIGHT: 930
EST. WEIGHT RANGE: 875-1050
USDA GRADES: 95% L-1 & M-1 5% L-2 & M-2
FLESH #: 5 & 6

DESCRIPTION:
50 Black, 7 Red, 8 Char X

PI NEGATIVE

MANAGEMENT:
Cattle are on pasture and hay plus wet stillage and 3# per head per day of Co-op pellets stillage booster with ProSolution mineral with Rumensin.

1 shot each in neck—Pyramid 5+Presponse, Pyramid 5, Bar-Vac 7



Dewormed and deloused with Eprinex. Implanted with Component TE-G. Castrated with knife.

CONDITIONS:
Cattle will be penned by 7:00 AM morning of weigh up in a dry lot. Buyers truck get tare wt by 7:00 AM and travel 30 miles to farm, load and haul to Jack Daniels Distillery and weigh on truck with a **2% shrink**. Cattle can be weighed at Exit 114, Truck Plaza in Manchester.

TAKE 48,000-50,000# LOAD OFF HEAVY END

Truck must weigh on a 70' scale - NO SPLIT WEIGHING

Available September 9th—16th

UPI REPRESENTATIVE: Frank Poling

SLIDE: Up Only: 8 Cents



PRICE/CWT: _____

BUYER: _____

Lot 24-184

OWNER: West Farms
Columbia TN

BQA #: TN #280

HEAD: 60 Steers

EST. AVG. WEIGHT: 975

EST. WEIGHT RANGE: 900-1025

USDA GRADES: 95% L-1 & M-1 5% L-2 & M-2

FLESH #: 5

DESCRIPTION:

90% Black & BB, 10% Red, RB, & Char X

Cattle put together 120+ days. 50% Home Raised by Angus bulls.

Couple with 3" nubs.

MANAGEMENT:

Cattle are on pasture and hay plus 12# per head per day of Commodity blend feed with mineral.

1 shot each— Nasalgen 3 PMH, Boostered with Bovishield Gold 5, 7 Way Blackleg

Dewormed with Longrange. Implanted with Ralgro.

CONDITIONS:

Cattle will be penned by 8:00 AM morning of weigh up in a dry lot. Buyers trucks get tare wt by 8:00 AM and travel 20 miles to farm, load and haul to Pilot TS, Exit 172, off I-40 and weigh on the truck with a 2% shrink.

TAKE 48,000-50,000# LOAD OFF HEAVY END

Available September 9th—16th

UPI REPRESENTATIVE: Frank Poling

SLIDE: Up Only: 8 Cents



PRICE/CWT: _____

BUYER: _____

Follow us



Performance Feeds




Serving the Southeastern United States

Specializing In:

- Complete Feeds
- Premixes
- Supplements
- Minerals
- Low Moisture Tubs
- Commodities
- Animal Health Supplies

We Deliver High Quality Livestock Feeds
at the **Lowest Possible Cost to the Producer.**



Contact Us Today at 866-699-5080
Or Visit Us on the Web at www.performance-feeds.com

INFORCE™ 3

**ONE SHOT®
BVD**

Complete respiratory protection

INFORCE™ 3 & ONE SHOT® BVD give you a lot of &s when it comes to calf immunization.

It begins with intranasal INFORCE 3 & the rapid innate & active immunity it provides where IBR, BRSV & PI₃ respiratory diseases start & continues with immune system priming against future exposure. Plus, when you administer ONE SHOT BVD subcutaneously, your calves receive superior Type 1 BVD & Type 2 BVD & *Mannheimia haemolytica* protection.

Because when you start with a balanced immunization program, you help calves stay healthy & grow to their potential & prevent the spread of diseases & earn a better price at market & ... well, you get the picture.

Learn more by contacting your local Zoetis representative or visiting CompleteCalfProtection.com.

All trademarks are the property of Zoetis Inc., its affiliates and/or its licensors.
© 2016 Zoetis Inc. All rights reserved. INF-00025

zoetis

Lot 24-185

OWNER: Travis Holsomback/Steve Bass
Resaca GA

BQA #:
HEAD: 88 Heifers
EST. AVG. WEIGHT: 650
EST. WEIGHT RANGE: 600-700
USDA GRADES: 90% L-1 & M-1 10% L-2 & M-2
FLESH #: 5

DESCRIPTION:
50% Black & BB, 50% Char X
5 hd with 1/8 ear

Cattle are not weaned. Home Raised by Angus bulls.

MANAGEMENT:
Cattle are on pasture and hay plus Flemming Summer
Grazing mineral.

1 shot each in neck— Pyramid 5 + Prespense, BarVac 7

Dewormed with Longrange. No implants.

CONDITIONS:
Cattle will be penned by daylight on the morning of weigh
up. Hauled to loading barn to be sorted and will be
weighed starting 3:00 PM on the farm's certified scales
straight. **CAN BE PREG CHECKED, AFTER WGH UP, PRIOR
TO SHIPMENT AT BUYERS EXPENSE—3 DAY NOTICE
REQUIRED.**

TAKE 48,000-50,000# LOAD OFF HEAVY END

Available November 4th—15th

MUST LOAD SAME DAY AS LOT 24-161

UPI REPRESENTATIVE: Jonathan Trew

SLIDE: Up Only: 10 Cents



PRICE/CWT: _____

BUYER: _____

Lot 24-186

OWNER: Donald Jernigan/Alvin Brandon
Christiana/Bradyville TN



BQA #: TN #1849/#16522
HEAD: 64+/- Heifers
EST. AVG. WEIGHT: 680
EST. WEIGHT RANGE: 600-800
USDA GRADES: 95% L-1 & M-1 5% L-2 & M-2
FLESH #: 5

DESCRIPTION:
100% Black & BB

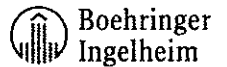
Weaned July 2024. Home Raised by Angus bulls.
*Several replacement quality heifers. Disposition will be
good! Reputation females.*

GUARANTEED OPEN

CATTLE ARE NOT RUNNING TOGETHER

MANAGEMENT:
Cattle are on pasture and hay plus 8# per head per day of
Co-op 14% Commodity blend feed or 15% Maximizer and
free choice mineral with Rumensin.

2 shots each in neck— Bar-Vac 7/Somnus, Pyramid 5 +
Prespense SQ



Dewormed with Eprinex.

CONDITIONS:
Cattle will be penned by 7:00 AM morning of weigh up in a
dry lot. Hauled 20 miles to Gilmore Livestock by 10:00 AM
and weighed on the ground with a 1% shrink.

TAKE ALL

Available September 16th—17th, 19th—20th

UPI REPRESENTATIVE: Richard Brown

SLIDE: Up Only: 10 Cents



PRICE/CWT: _____

BUYER: _____

Lot 24-187

OWNER: Turner McKay
Culleoka TN

BQA #:
HEAD: 28 Heifers
EST. AVG. WEIGHT: 690
EST. WEIGHT RANGE: 615-765
USDA GRADES: 90% L-1 & M-1 10% L-2 & M-2
FLESH #: 4 few 5

DESCRIPTION:
100% Black & BB
2 hd show 1/8 ear

Cattle put together in March 2023.

Few with Pinkeye scars.

MANAGEMENT:
Cattle are on pasture plus 3# per head every other day of Commodity mix feed with mineral.

1 shot each in neck—7-way Blackleg, 4-way Respiratory

Dewormed with Noromectin. No implants.

CONDITIONS:
Cattle will be penned morning of weigh up by 7:00 AM in a dry lot. Hauled 15 miles to UPI Columbia Livestock Center by 9:00 AM and weighed on ground with a 1% shrink. **CAN BE PREG CHECKED, AFTER WGH UP, PRIOR TO SHIPMENT AT BUYERS EXPENSE—3 DAY NOTICE REQUIRED.**

TAKE ALL

Available September 10th, 12th—16th

UPI REPRESENTATIVE: Frank Poling

SLIDE: Up Only: 10 Cents



PRICE/CWT: _____

BUYER: _____

Lot 24-188

OWNER: Jimmy or Randall Mann
Kelso TN

BQA #:
HEAD: 25 Heifers
EST. AVG. WEIGHT: 700
EST. WEIGHT RANGE: 625-750
USDA GRADES: 90% L-1 & M-1 10% L-2 & M-2
FLESH #: 5

DESCRIPTION:
22 Black & BB, 2 Red & RB, 1 Char X

Weaned June 13, 2024. Home Raised by Angus bulls.

MANAGEMENT:
Cattle are on pasture and 9# per head per day of Commodity blend feed plus mineral with fly control.

2 shots each in neck— Virashield 6, Bar-Vac 7/Somnus, Pinkeye

1 shot each in neck— Lutalyse

Dewormed with Eprinex. No implants.

CONDITIONS:
Cattle will be penned by 7:00 AM morning of weigh up in a dry lot. Hauled 9 miles to UPI Fayetteville Livestock Center by 9:00 AM and weighed on the ground with a 2% shrink. **CAN BE PREG CHECKED, AFTER WGH UP, PRIOR TO SHIPMENT AT BUYERS EXPENSE—3 DAY NOTICE REQUIRED.**

TAKE ALL

Available September 9th, 11th—16th

UPI REPRESENTATIVE: Frank Poling

SLIDE: Up Only: 10 Cents



PRICE/CWT: _____

BUYER: _____

Lot 24-189

OWNER: Dacosta & Fuller
Wartrace TN
BQA #: TN #496
HEAD: 75 Heifers
EST. AVG. WEIGHT: 725
EST. WEIGHT RANGE: 675-825
USDA GRADES: 90% L-1 & M-1 10% L-2 & M-2
FLESH #: 5 few 4

DESCRIPTION:
66 Black & BB, 4 Red & RB, 5 Char X

Weaned June 10, 2024 or earlier. Home Raised by Angus, Hereford, or Sim-Angus bulls.

Few with Pinkeye scars.

MANAGEMENT:
Cattle are on pasture plus 9-10# per head per day of 14% Commodity Mix feed and mineral.

2 shots each in neck— Vision 7, ENDOVAC-Beef
1 shot each in neck—Pyramid 5 + Presponse, Pyramid 5, Lutalyse

Dewormed with Longrange. No implants.

CONDITIONS:
Cattle will be penned by 7:00 AM morning of weigh up in a dry lot. Buyers truck get tare wt by 7:00 AM and travel 20 miles to farm load and haul to Loves TS, off I-24, Exit 89 and weigh on truck with a 2% shrink. **CAN BE PREG CHECKED, AFTER WGH UP, PRIOR TO SHIPMENT AT BUYERS EXPENSE—3 DAY NOTICE REQUIRED.**

TAKE 48,000-50,000# LOAD OFF HEAVY END
Available September 9th—10th, 13th—16th

UPI REPRESENTATIVE: Frank Poling

SLIDE: Up Only: 10 Cents



PRICE/CWT: _____

BUYER: _____

Lot 24-190

OWNER: Andy Leonard
Christiana TN
BQA #:
HEAD: 23 Heifers
EST. AVG. WEIGHT: 725
EST. WEIGHT RANGE: 635-835
USDA GRADES: 95% L-1 & M-1 5% L-2 & M-2
FLESH #: 5

DESCRIPTION:
22 Black & BB, 1 Char X

Weaned July 1, 2024. Home Raised by Angus bulls.

BREEDING QUALITY HEIFERS—GUARANTEED OPEN

MANAGEMENT:
Cattle are on pasture and hay plus 12# per head per day of Co-op 16% Commodity blend feed with mineral.

2 shots each in neck— Bar-Vac 7/Somnus, Pyramid 5 + Presponse SQ
1 shot each in neck—Lutalyse

Dewormed with Dectomax Injectable.

CONDITIONS:
Cattle will be penned by 7:00 AM morning of weigh up in a dry lot. Hauled 10 miles to Gilmore Livestock and weighed on the ground with a 1% shrink.

TAKE ALL
Available September 9th—13th

UPI REPRESENTATIVE: Richard Brown

SLIDE: Up Only: 10 Cents



PRICE/CWT: _____

BUYER: _____

Lot 24-191

OWNER: Burton Farms
Mulberry TN

BQA #:
HEAD: 66 Heifers
EST. AVG. WEIGHT: 765
EST. WEIGHT RANGE: 700-825
USDA GRADES: 90% L-1 & M-1 10% L-2 & M-2
FLESH #: 5 few 4

DESCRIPTION:
62 Black & BB, 4 Red, RB, & Char X

Cattle put together 150+ days.

PI NEGATIVE

MANAGEMENT:
Cattle are on pasture plus 10# per head per day of a Commodity blend feed with Mix 30 mineral.

2 shots each in neck—Pyramid 5, 7-way Blackleg

1 shot each in neck—Multimin 90

Dewormed with Longrange. Implanted with Ralgro.

CONDITIONS:
Cattle will be penned morning of weigh up by 7:00 AM in a dry lot. Hauled 10 miles to UPI Fayetteville Livestock Center by 9:00 AM and weighed on ground with a 2% shrink. **CAN BE PREG CHECKED, AFTER WGH UP, PRIOR TO SHIPMENT AT BUYERS EXPENSE—3 DAY NOTICE REQUIRED.**

TAKE 48,000-50,000# LOAD OFF HEAVY END

Available September 9th, 11th—16th

UPI REPRESENTATIVE: Frank Poling

SLIDE: Up Only: 10 Cents



PRICE/CWT: _____

BUYER: _____

Lot 24-192

OWNER: Joe Sommers
McMinnville TN

BQA #:
HEAD: 61 Heifers
EST. AVG. WEIGHT: 795
EST. WEIGHT RANGE: 660-860
USDA GRADES: 90% L-1 & M-1 & 10% L-1 & M-1
FLESH #: 5

DESCRIPTION:
100% Black

Weaned July 15, 2024. Home Raised by Angus bulls.

MANAGEMENT:
Cattle are on pasture and 6# per head per day of ground corn, DDG, and haylage.

1 shot each in neck—Pyramid 5 + Prespense SQ, Vision 7, Lutalyse

Dewormed with Longrange.

CONDITIONS:
Cattle will be penned by 7:00 AM morning of weigh up in a dry lot. Hauled 4 miles on gooseneck to buyer's truck by 8:00 AM. Buyer's truck get tare wt by 7:00 AM and travel 30 miles to farm, load and haul to Pilot Truck Stop, I-65, Exit 22 and weigh on the truck with a 1% shrink. **CAN BE PREG CHECKED, AFTER WGH UP, PRIOR TO SHIPMENT AT BUYERS EXPENSE—3 DAY NOTICE REQUIRED.**

TAKE 48,000-50,000# LOAD OFF HEAVY END

Available September 9th—16th

UPI REPRESENTATIVE: Jonathan Trew

SLIDE: Up Only: 10 Cents



PRICE/CWT: _____

BUYER: _____

Lot 24-193

OWNER: West Farms
Columbia TN

BQA #: TN #280

HEAD: 65 Heifers

EST. AVG. WEIGHT: 835

EST. WEIGHT RANGE: 775-900

USDA GRADES: 95% L-1 & M-1 5% L-2 & M-2

FLESH #: 5

DESCRIPTION:

90% Black & BB, 10% Red, RB, & Char X

***50% Home Raised by Angus bulls. Cattle put together
120+ days.***

2-3 heifers with few neck warts

MANAGEMENT:

Cattle are on pasture and hay plus 12# per head per day of
Commodity blend feed with mineral.

1 shot each— Nasalgen 3 PMH, Boostered with Bovishield
Gold 5, 7 Way Blackleg

Dewormed with Longrange. Implanted with Ralgro.

CONDITIONS:

Cattle will be penned by 7:00 AM morning of weigh up in a
dry lot. Hauled 6 miles to UPI Columbia Livestock Center
by 9:00 AM and weigh on ground with a ***2% shrink***. **CAN
BE PREG CHECKED, AFTER WGH UP, PRIOR TO SHIPMENT
AT BUYERS EXPENSE—3 DAY NOTICE REQUIRED.**

TAKE 48,000-50,000# LOAD OFF HEAVY END

Available September 10th, 12th—16th

UPI REPRESENTATIVE: Frank Poling

SLIDE: Up Only: 9 Cents



PRICE/CWT: _____

BUYER: _____

PROVEN.

YOUR EXPANDED FAMILY OF CATTLE MINERALS.

FEEDS • KNOW-HOW • CARE

CO-OP

PURINA



protritionfeed.com

PROTRITION

PROVEN ANIMAL NUTRITION & CARE SOLUTIONS



Cattle First.



5% Sterile Solution Extended-Release Injectable
For Subcutaneous Use
Parasiticide for Cattle on Pasture

For the Treatment and Control of Internal and External Parasites of Cattle on Pasture with Persistent Effectiveness

Not for use in female dairy cattle 20 months of age or older, including dry dairy cows. Not for use in calves to be processed for veal.

Not for use in breeding bulls, or in calves less than 3 months of age.

Not for use in cattle managed in feedlots or under intensive rotational grazing.

Caution: Federal law restricts this drug to use by or on the order of a licensed veterinarian.

INDICATIONS FOR USE

LONGRANGE, when administered at the recommended dose volume of 1 mL per 110 lb (50 kg) body weight, is effective in the treatment and control of the following internal and external parasites of cattle:

Gastrointestinal Roundworms	Lungworms
<i>Bunostomum phlebotomum</i> – Adults and L ₄	
<i>Cooperia oncophora</i> – Adults and L ₄	<i>Dictyoaculus viviparus</i> – Adults
<i>Cooperia punctata</i> – Adults and L ₄	
<i>Cooperia surnabada</i> – Adults and L ₄	Grubs
<i>Haemonchus placei</i> – Adults	
<i>Oesophagostomum radiatum</i> – Adults	<i>Hypoderma bovis</i>
<i>Ostertagia lyrata</i> – Adults	
<i>Ostertagia ostertagi</i> – Adults, L ₄ and inhibited L ₄	Mites
<i>Trichostrongylus axei</i> – Adults and L ₄	
<i>Trichostrongylus colubriformis</i> – Adults	<i>Sarcoptes scabiei</i> var. <i>bovis</i>

DOSEAGE AND ADMINISTRATION

LONGRANGE® (eprinomectin) should be given only by subcutaneous injection in front of the shoulder at the recommended dosage level of 1 mg eprinomectin per kg body weight (1 mL per 110 lb body weight). Each mL of LONGRANGE contains 50 mg of eprinomectin, sufficient to treat 110 lb (50 kg) body weight. Divide doses greater than 10 mL between two injection sites to reduce occasional discomfort or site reaction.

Body Weight (lb)	Dose Volume (mL)
110	1
220	2
330	3
440	4
550	5
660	6
770	7
880	8
990	9
1100	10

Do not underdose. Ensure each animal receives a complete dose based on a current body weight. Underdosing may result in ineffective treatment, and encourage the development of parasite resistance.



WARNINGS AND PRECAUTIONS

Withdrawal Periods and Residue Warnings

Animals intended for human consumption must not be slaughtered within 48 days of the last treatment. This drug product is not approved for use in female dairy cattle 20 months of age or older, including dry dairy cows. Use in these cattle may cause drug residues in milk and/or in calves born to these cows. A withdrawal period has not been established for pre-ruminating calves. Do not use in calves to be processed for veal.

User Safety Warnings

Not for Use in Humans. Keep this and all drugs out of the reach of children. Reproductive and developmental toxicities have been reported in laboratory animals following high, repeated exposures to N-methyl-2-pyrrolidone (NMP). Pregnant women should wear gloves and exercise caution or avoid handling this product. The Safety Data Sheet (SDS) contains more detailed occupational safety information.

To report adverse effects, to obtain an SDS, or for assistance, contact Boehringer Ingelheim Animal Health USA Inc. at 1-888-637-4251. For additional information about adverse drug experience reporting for animal drugs, contact FDA at 1-888-FDA-VETS or www.fda.gov/reportanimalae.

Animal Safety Warnings and Precautions

The product is likely to cause tissue damage at the site of injection, including possible granulomas and necrosis. These reactions have disappeared without treatment. Local tissue reaction may result in trim loss of edible tissue at slaughter.

Observe cattle for injection site reactions. If injection site reactions are suspected, consult your veterinarian. This product is not for intravenous or intramuscular use. Protect product from light. LONGRANGE® (eprinomectin) has been developed specifically for use in cattle only. This product should not be used in other animal species.

When to Treat Cattle with Grubs

LONGRANGE effectively controls all stages of cattle grubs. However, proper timing of treatment is important. Consult your veterinarian concerning the proper time for treatment.

Environmental Hazards

Not for use in cattle managed in feedlots or under intensive rotational grazing because the environmental impact has not been evaluated for these scenarios.

Other Warnings: Parasite resistance may develop to any dewormer, and has been reported for most classes of dewormers.

Fecal examinations or other diagnostic tests and parasite management history should be used to determine if the product is appropriate for the herd/flock, prior to the use of any dewormer. Following the use of any dewormer, effectiveness of treatment should be monitored (for example, with the use of a fecal egg count reduction test or another appropriate method).

A decrease in a drug's effectiveness over time as calculated by fecal egg count reduction tests may indicate the development of resistance to the dewormer administered. Your parasite management plan should be adjusted accordingly based on regular monitoring.

Macrocyclic lactones provide prolonged drug exposure that may increase selection pressure for resistant parasites. This effect may be more pronounced in extended-release formulations.

TARGET ANIMAL SAFETY

Not for use in bulls, as reproductive safety testing has not been conducted in males intended for breeding or actively breeding. Not for use in calves less than 3 months of age because safety testing has not been conducted in calves less than 3 months of age.

STORAGE

Store at 77° F (25° C) with excursions between 59° and 86° F (15° and 30° C). Protect from light. This information is not comprehensive. Consult your veterinarian for more information. Visit <https://bi-animalhealth.com/cattle/products/longrange> for the FDA approved product label.

Approved by FDA under NADA # 141-327
Marketed by: Boehringer Ingelheim Animal Health USA Inc., Duluth, GA 30096
The Cattle Head Logo® and LONGRANGE® are registered trademarks of Boehringer Ingelheim Animal Health USA Inc.
© 2022 Boehringer Ingelheim Animal Health USA Inc. All rights reserved.
1050-2889-99, Rev. 07/2022, 8LDN016F US-80V-0173-2023A-V2



INVESTING IN LONGRANGE® [EPRINOMECTIN] DOESN'T JUST TIP THE SCALES IN YOUR FAVOR. IT DARN NEAR BREAKS THEM.

Getting more from your dewormer starts with a proven investment. LONGRANGE is the first and only dewormer that provides up to 150 days of parasite control.¹ It's how top producers help their herds pack on the pounds, and in turn, bank more bucks. LONGRANGE is the difference between being average and being at the top of your game. So, next time you're deworming cattle, don't just get the job done. **Get it outdoors.**

PROVEN TO PAY OFF IN POUNDS AND DOLLARS. CALCULATE THE RETURN FOR YOUR HERD.



longrangecalculator.com

OUTLAST. OUTPERFORM. OUTDO.

LONGRANGE IMPORTANT SAFETY INFORMATION: Do not treat within 48 days of slaughter. Not for use in female dairy cattle 20 months of age or older, including dry dairy cows, or in veal calves. Post-injection site damage (e.g., granulomas, necrosis) can occur. These reactions have disappeared without treatment. Not for use in breeding bulls, or in calves less than 3 months of age. Not for use in cattle managed in feedlots or under intensive rotational grazing. Pregnant women should wear gloves and exercise caution or avoid handling this product.

¹ Dependent upon parasite species, as referenced in FOI summary and LONGRANGE product label.