

Lower Middle Tennessee Cattle Association

# VIDEO BOARD SALE

Friday, August 2, 2024

9 a.m. CST

**UPI — Columbia**

1231 Industrial Park Rd., Columbia, TN

View the catalog  
at [uproducers.com](http://uproducers.com)



Bid online  
at [lmauctions.com](http://lmauctions.com)



Sale management provided by:

United  
 **Producers, Inc.**



**WELCOME TO THE  
LOWER MIDDLE TENNESSEE CATTLE ASSOCIATION  
*VIDEO BOARD SALE***

August 2, 2024

THIS OFFERING INCLUDES:

2,104 STEERS  
977 HEIFERS

**3,081 TOTAL HEAD OFFERED**

**\*\* AUCTIONEER \*\*:**

**Joe McKee**

**Lebanon, TN**

Sale starts at **9 AM CST** at the **Columbia Livestock Center:**  
1231 Industrial Park Road  
Columbia, TN

Please contact the office at (931) 223-8323 prior to the sale to reserve your line.

***SALE BROADCAST LIVE AT [www.lmaauctions.com](http://www.lmaauctions.com)***

For more information contact:

Dennis Wentzel  
President, LMTCA

Richard Brown  
(931) 239-9785

Frank Poling  
UPI  
(931) 212-9962

Josh Woodward  
UPI  
(931) 703-9090



# **UPI VIDEO SALE REPRESENTATIVES**

*Please contact one of our representatives for assistance.*

- GENERAL OFFICE                    931-223-8323
- FRANK POLING                        931-212-9962
- RICHARD BROWN                    931-239-9785
- JIMMY JENNINGS                    931-993-6817
- JOSH WOODWARD                    931-703-9090
- BRIAN LOVELL                        502-381-7984
- JONATHAN TREW                    423-584-9976
- ROGER UPTON                        931-309-8798



Sale Management provided by:



August 2, 2024

LOT#	SELLER	HEAD	AVG WT	
24-115	Kettle Mills Livestock Co	132	635	Steers
24-116	Graff/Mason/Lee/Dixon	50+/-	640	Steers
24-117	Dacosta & Fuller	74	710	Steers
24-118	Graff/Mason/Lee/Dixon	71	710	Steers
24-119	Parker/Bryan/Loftis	66	750	Steers
24-120	Gatlin Brandon	139	770	Steers
24-121	Graff/Mason/Brown/Lee/Dixon	64	810	Steers
24-122	Benjie Daniel	63	810	Steers
24-123	Eslick Family Farms	33	820	Steers
24-124	Phillip Reed	60	825	Steers
24-125	Dacosta & Fuller	63	825	Steers
24-126	Wayne Cantrell	49	825	Steers
24-127	Heritage Livestock	143	850	Steers
24-128	Heritage Livestock	66	850	Steers
24-129	Heritage Livestock	130	850	Steers
24-130	Heritage Livestock	76	850	Steers
24-131	David Denton	70	850	Steers
24-132	Bill Dixon	59	850	Steers
24-133	Andrew Griffith	65	850	Steers
24-134	Parker/Bryan/Loftis	58	860	Steers
24-135	Wayside Farms	60	875	Steers
24-136	Gray Hollow Farms	60	875	Steers
24-137	Ray Farms	60	890	Steers

Sale Management provided by:



August 2, 2024

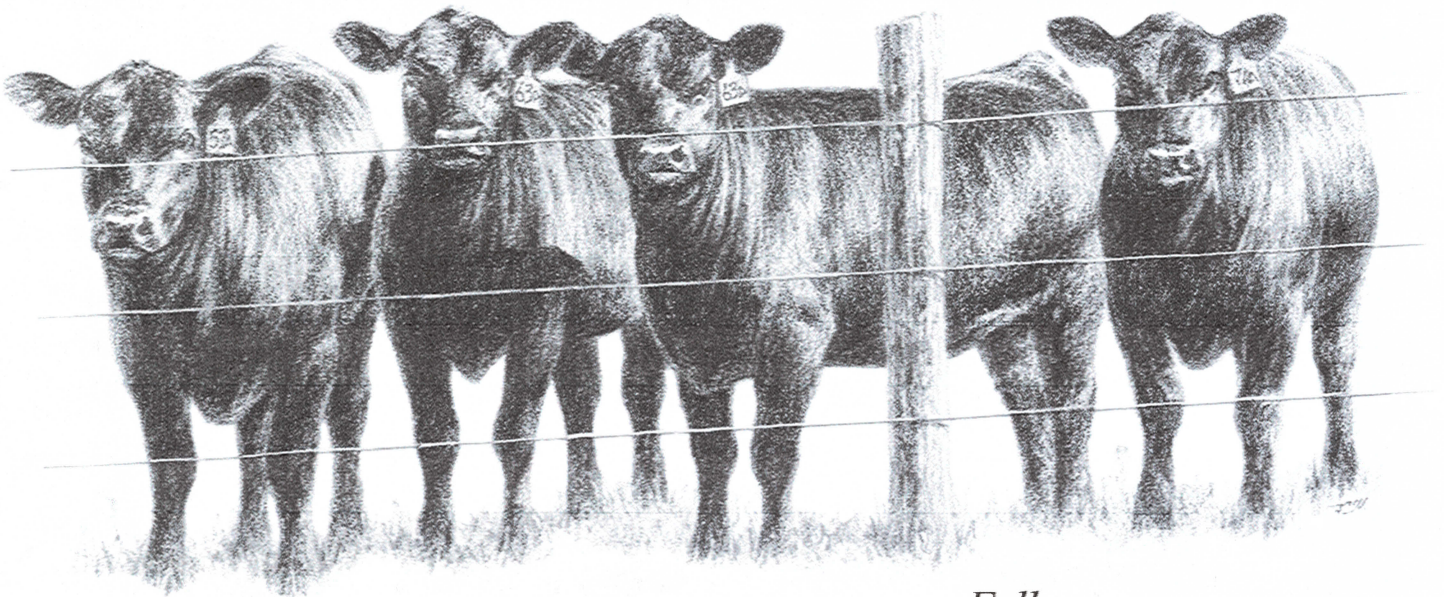
LOT#	SELLER	HEAD	AVG WT	
24-138	Ray Farms	60	950	Steers
24-139	Wilhelm Farms	58	950	Steers
24-140	Wet Stone Creek Inc	55	965	Steers
24-141	Wet Stone Creek Inc	55	965	Steers
24-142	West Farms	55	985	Steers
24-143	Ralston Farms	110	1000	Steers
24-144	Graff/Mason/Brown/Lee/Dixon	80	660	Heifers
24-145	Dacosta & Fuller	75	675	Heifers
			LOAD: 715	
24-146	Gatlin Brandon	100	ALL: 700	Heifers
24-147	Ronnie Parker	45+/-	700	Heifers
24-148	Bill Thrasher	45+/-	700	Heifers
24-149	Heritage Livestock	200	750	Heifers
24-150	Rob & Erin Marks	66	835	Heifers
24-151	West Farms	65	835	Heifers
24-152	Breezy Hilltop Farms	62	835	Heifers
24-153	Breezy Hilltop Farms	120	875	Heifers
24-154	Ralston Farms	64	935	Heifers
24-155	Ralston Farms	55	1050	Heifers



Have all your animal health needs  
delivered directly to your door...

# From Antibiotics and Vaccines to Ear Tags and Wormers

If your cattle need it, we can provide it.



Contact Us Today at 888-699-5088  
[www.performance-feeds.com](http://www.performance-feeds.com)

Follow us on





# BEFORE YOU SEND THEM OFF, MAKE SURE THEY'RE PROTECTED.

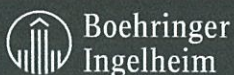
Use Pyramid® 5 + Presponse® SQ, the only vaccine  
labeled to protect against BVD 1b.



PREVENTION WORKS.

It's time to go back to school on protecting your calves from respiratory disease. With BVD 1b increasingly prevalent in calves, make PYRAMID 5 + PRESPONSE SQ a part of your preconditioning routine this fall. With the broadest overall protection, PYRAMID 5 + PRESPONSE SQ ensures that your calves are being protected against BVD Type 1, Type 1b and Type 2, along with IBR, BRSV, PI<sub>3</sub> and *M. haemolytica*. So, make sure you have another successful year by contacting your Boehringer Ingelheim Vetmedica, Inc. representative today.

Learn more at [bi-vetmedica.com/cattle](http://bi-vetmedica.com/cattle).



Prevention Works does not imply prevention label claims for use of a vaccine/vaccines.  
PYRAMID and PRESPONSE are registered trademarks of Boehringer Ingelheim Vetmedica, Inc.  
©2015 Boehringer Ingelheim Vetmedica, Inc. BIVI/PYPR/151047.

**PYRAMID® 5**  
**+ PRESPONSE® SQ**

Lot 24-115

OWNER: Kettle Mills Livestock Co  
Hampshire TN  
BQA #:   
# HEAD: 132 Steers  
EST. AVG. WEIGHT: 635  
EST. WEIGHT RANGE: 550-750  
USDA GRADES: 50% M-1 & S-1 50% M-2 & S-2  
FLESH #: 4 few 5

DESCRIPTION:  
50% Black & BB, 50% Red  
5-7 hd show 1/2 ear

Weaned February 20, 2024. Home Raised by Red Angus bulls.

PI NEGATIVE

Couple with 2-3" nubs.

MANAGEMENT:  
Cattle are on pasture only.

2 shots each in neck—Vision 7, Express 5

Dewormed with Valbazen. No implants.

CONDITIONS:  
Cattle will be penned by 7:00 AM morning of weigh up in a dry lot. Hauled 20 miles to UPI Columbia Livestock Center and weighed on the ground with a 1% shrink.

TAKE ALL

Available August 6th, 8th—12th

UPI REPRESENTATIVE: Josh Woodward

SLIDE: Up Only: 10 Cents



PRICE/CWT: \_\_\_\_\_

BUYER: \_\_\_\_\_

Lot 24-116

OWNER: Graff/Mason/Lee/Dixon  
Livingston TN  
BQA #: TN #1996  
# HEAD: 50+/- Steers  
EST. AVG. WEIGHT: 640  
EST. WEIGHT RANGE: 575-700  
USDA GRADES: 90% L-1 & M-1 10% L-2 & M-2  
FLESH #: 5



DESCRIPTION:  
49 Black & BB, 1 Red

Weaned 60-90+ days. Home Raised by Angus or Hereford bulls.

CATTLE ARE NOT RUNNING TOGETHER

MANAGEMENT:  
Cattle are on pasture plus 12% Commodity blend feed and free choice mineral with Rumensin.

2 shots each in neck—Bar-Vac 7/Somnus or Ultrabac 7/Somnus or Alpha 7

1 shot each in neck—Pyramid 5 + Presponse SQ (Boostered with Pyramid 5) or Bovishield Gold 5 (Boostered with Bovishield Gold 5)

Dewormed with Dectomax or Cydectin.

CONDITIONS:  
Cattle will be penned by 7:00 AM morning of weigh up in a dry lot. Hauled 15 miles to JB Cattle Co in Rickman, TN by 10:00 AM and weighed on the ground with a 2% shrink.

TAKE ALL

Available August 12th—16th  
MUST LOAD AFTER LOT 24-118

UPI REPRESENTATIVE: Richard Brown

SLIDE: Up Only: 10 Cents



PRICE/CWT: \_\_\_\_\_

BUYER: \_\_\_\_\_

**Lot 24-117**

**OWNER:** Dacosta & Fuller  
Wartrace TN  
**BQA #:** TN #496  
**# HEAD:** 74 Steers  
**EST. AVG. WEIGHT:** 710  
**EST. WEIGHT RANGE:** 650-775  
**USDA GRADES:** 90% L-1 & M-1 10% L-2 & M-2  
**FLESH #:** 4 & 5

**DESCRIPTION:**  
100% Black & BB

Weaned June 10, 2024 or earlier. Home Raised by Angus, Hereford, or Sim-Angus bulls.

Few with Pinkeye scars.

**MANAGEMENT:**  
Cattle are on pasture plus 9-10# per head per day of 14% Commodity Mix feed and mineral.

2 shots each in neck—Vision 7, ENDOVAC-Beef  
1 shot each in neck—Pyramid 5 + Presponse, Pyramid 5

Dewormed with Longrange. Implanted with Ralgro in April 2024.

**CONDITIONS:**  
Cattle will be penned by 7:00 AM morning of weigh up in a dry lot. Buyers truck get tare wt by 7:00 AM and travel 20 miles to farm load and haul to Loves TS, off I-24, Exit 89 and weigh on truck with a 2% shrink.

**TAKE 48,000-50,000# LOAD OFF HEAVY END**  
**Available August 5th—12th**

**UPI REPRESENTATIVE:** Frank Poling

**SLIDE: Up Only:** 10 Cents



**PRICE/CWT:** \_\_\_\_\_

**BUYER:** \_\_\_\_\_

**Lot 24-118**

**OWNER:** Graff/Mason/Lee/Dixon  
Livingston TN  
**BQA #:** TN #1996  
**# HEAD:** 71 Steers  
**EST. AVG. WEIGHT:** 710  
**EST. WEIGHT RANGE:** 675-775  
**USDA GRADES:** 90% L-1 & M-1 10% L-2 & M-2  
**FLESH #:** 5



**DESCRIPTION:**  
100% Black & BB

Weaned 60-90+ days. Home Raised by Angus or Hereford bulls.

**CATTLE ARE NOT RUNNING TOGETHER**

**MANAGEMENT:**  
Cattle are on pasture plus 12% Commodity blend feed and free choice mineral with Rumensin.

2 shots each in neck—Bar-Vac 7/Somnus or Ultrabac 7/  
Somnus or Alpha 7

1 shot each in neck—Pyramid 5 + Presponse SQ  
(Boostered with Pyramid 5) or Bovishield Gold 5  
(Boostered with Bovishield Gold 5)

Dewormed with Dectomax or Cydectin.

**CONDITIONS:**  
Cattle will be penned by 7:00 AM morning of weigh up in a dry lot. Hauled 15 miles to JB Cattle Co in Rickman, TN by 10:00 AM and weighed on the ground with a 2% shrink.

**TAKE 48,000-50,000# LOAD OFF HEAVY END**  
**Available August 12th—16th**  
**MUST LOAD BEFORE LOT 24-116**

**UPI REPRESENTATIVE:** Richard Brown

**SLIDE: Up Only:** 10 Cents



**PRICE/CWT:** \_\_\_\_\_

**BUYER:** \_\_\_\_\_

Lot 24-119

OWNER: Parker/Bryan/Loftis Morrison TN  
BQA #: TN #1630 /#2164  
# HEAD: 66 Steers  
EST. AVG. WEIGHT: 750  
EST. WEIGHT RANGE: 650-800  
USDA GRADES: 95% L-1 & M-1 5% L-2 & M-2  
FLESH #: 5



DESCRIPTION:  
100% Black & BB

Weaned May 2024. Home Raised by Angus or Hereford bulls.

CATTLE ARE NOT RUNNING TOGETHER

MANAGEMENT:  
Cattle are on pasture plus 6# per head per day of 14% Commodity blend feed and Co-op Supreme mineral.

2 shots each in neck—Vision 7/Somnus  
1 shot each in neck—Pyramid 5 + Presponse, Boostered with Pyramid 5

Dewormed with Longrange or Dectomax. Castrated with knife.

CONDITIONS:  
Cattle will be penned by 7:00 AM morning of weigh up in a dry lot. Hauled 10 miles to Summitville Cattle Co by 9:00 AM and weighed with a 2% shrink.

TAKE 48,000-50,000# LOAD OFF HEAVY END

Available August 12th—14th

MUST LOAD AFTER LOT 24-134

UPI REPRESENTATIVE: Richard Brown

SLIDE: Up Only: 10 Cents



PRICE/CWT: \_\_\_\_\_

BUYER: \_\_\_\_\_

Lot 24-120

OWNER: Gatlin Brandon Tazewell TN  
BQA #: TN CERTIFIED  
# HEAD: 139 Steers  
EST. AVG. WEIGHT: 770  
EST. WEIGHT RANGE: 700-875  
USDA GRADES: 95% L-1 & M-1 5% L-2 & M-2  
FLESH #: 5

DESCRIPTION:  
138 Black & BB, 1 Char X

Weaned July 6, 2024. Home Raised by Angus bulls. AI Sired by Guarantee or naturally sired by sons of Growth Fund and Sure Fire.

MANAGEMENT:  
Cattle are on pasture plus Commodity blend of corn, soyhull pellets, corn gluten with Rumensin.

2 shots each in neck— Triangle 5  
1 shot each in neck— Vision 7, Pyramid 5 + Presponse SQ

Dewormed with Cydectin in the Spring and Safeguard at weaning.

CONDITIONS:  
Cattle will be penned by 7:00 AM morning of weigh up in a dry lot. Weighed on the ground at the farm scales by 10:00 AM with a 2% shrink.

TAKE 2/ 48,000-50,000# LOAD OFF HEAVY END

Available August 20th—27th

PREFER TO LOAD SAME DAY AS LOT 24-146

UPI REPRESENTATIVE: Jonathan Trew

SLIDE: Up Only: 10 Cents



PRICE/CWT: \_\_\_\_\_

BUYER: \_\_\_\_\_

Lot 24-121

OWNER: Graff/Mason/Brown/Lee/Dixon  
Livingston TN



BQA #: TN #1996/#3823

# HEAD: 64 Steers

EST. AVG. WEIGHT: 810

EST. WEIGHT RANGE: 775-925

USDA GRADES: 95% L-1 & M-1 5% L-2 & M-2

FLESH #: 5

DESCRIPTION:

100% Black & BB

Weaned 60-90+ days. Home Raised by Angus or Hereford bulls.

CATTLE ARE NOT RUNNING TOGETHER

MANAGEMENT:

Cattle are on pasture plus 12% Commodity blend feed and free choice mineral with Rumensin.

2 shots each in neck—Bar-Vac 7/Somnus or Ultrabac 7/  
Somnus or Alpha 7

1 shot each in neck—Pyramid 5 + Presponse SQ  
(Boostered with Pyramid 5) or Bovishield Gold 5  
(Boostered with Bovishield Gold 5)

Dewormed with Dectomax or Cydectin.

CONDITIONS:

Cattle will be penned by 7:00 AM morning of weigh up in a dry lot. Hauled 15 miles to JB Cattle Co in Rickman, TN by 10:00 AM and weighed on the ground with a 2% shrink.

TAKE 48,000-50,000# LOAD OFF HEAVY END

Available August 5th—7th

UPI REPRESENTATIVE: Richard Brown

SLIDE: Up Only: 9 Cents



PRICE/CWT: \_\_\_\_\_

BUYER: \_\_\_\_\_

Lot 24-122

OWNER: Benjie Daniel  
Charlotte TN

BQA #:

# HEAD: 63 Steers

EST. AVG. WEIGHT: 810

EST. WEIGHT RANGE: 750-865

USDA GRADES: 90% L-1 & M-1 10% L-2 & M-2

FLESH #: 5

DESCRIPTION:

58 Black & BB, 4 RB, 1 Char X

Cattle put together 120+ days.

Few with Pinkeye scars.

MANAGEMENT:

Cattle are on a TMR consisting of corn silage, ryegrass silage, and Beef Concentrate.

2 shots each in neck—Vision 7

1 shot each in neck—Pyramid 5 + Presponse SQ,  
Boostered with Pyramid 5

Dewormed with Synanthic. No implants.

CONDITIONS:

Cattle will be penned by 7:00 AM morning of weigh up in a dry lot. Cattle will be weighed on the ground at Benjie Daniel's farm scales with a 2% shrink.

TAKE 48,000-50,000# LOAD OFF HEAVY END

Available August 5th—12th

UPI REPRESENTATIVE: Josh Woodward

SLIDE: Up Only: 9 Cents



PRICE/CWT: \_\_\_\_\_

BUYER: \_\_\_\_\_

**Lot 24-123**

**OWNER:** Eslick Family Farms  
Mulberry TN

**BQA #:**  
**# HEAD:** 33 Steers  
**EST. AVG. WEIGHT:** 820  
**EST. WEIGHT RANGE:** 725-875  
**USDA GRADES:** 90% L-1 & M-1 10% L-2 & M-2  
**FLESH #:** 5

**DESCRIPTION:**  
22 Black & BB, 3 Red & RB, 8 Char X  
(Including 1 skunk tail)

Weaned 45+ days. Home Raised by Angus or Charolais bulls.

**PI NEGATIVE**

**MANAGEMENT:**  
Cattle are on pasture plus 12-14# per head per day of a Commodity mix feed and mineral with Bovatec.

2 shots each in neck—Vision 7+Somnus, Pinkeye  
1 shot each in neck—Pyramid 5, ViraShield 6, Pastuerella

Dewormed with Longrange. Implanted with Ralgro in February 2024.

**CONDITIONS:**  
Cattle will be penned by 7:00 AM morning of weigh up in a dry lot. Hauled 12 miles to UPI Fayetteville Columbia Livestock Center by 9:00 AM and weighed on the ground with a 2% shrink.

**TAKE ALL**

Available August 5th, 7th—12th

**UPI REPRESENTATIVE:** Frank Poling

**SLIDE: Up Only:** 9 Cents



**PRICE/CWT:** \_\_\_\_\_

**BUYER:** \_\_\_\_\_

**Lot 24-124**

**OWNER:** Phillip Reed  
Milton TN

**BQA #:**  
**# HEAD:** 60 Steers  
**EST. AVG. WEIGHT:** 825  
**EST. WEIGHT RANGE:** 750-925  
**USDA GRADES:** 90% L-1 & M-1 10% L-2 & M-2  
**FLESH #:** 5 few 4

**DESCRIPTION:**  
100% Black & BB  
1-2 hd with 1/8 ear

*Cattle put together in November/December 2023.*

1-2 steers with few warts on neck.

**MANAGEMENT:**  
Cattle are on pasture and 5# per head per day of 11% Co-op Commodity mix feed.

2 shots each in neck—Triangle 5  
1 shot each in neck— BarVac CDT

Dewormed with Safeguard. No implants.

**CONDITIONS:**  
Cattle will be penned by 7:00 AM morning of weigh up in a dry lot. Hauled 20 miles to Alexandria Stockyard by 8:30 AM and weighed on the ground with a 1% shrink.

**TAKE 48,000-50,000# LOAD OFF HEAVY END**

Available August 5th—12th

**UPI REPRESENTATIVE:** Frank Poling

**SLIDE: Up Only:** 9 Cents



**PRICE/CWT:** \_\_\_\_\_

**BUYER:** \_\_\_\_\_

**Lot 24-125**

**OWNER:** Dacosta & Fuller  
Wartrace TN  
**BQA #:** TN #496  
**# HEAD:** 63 Steers  
**EST. AVG. WEIGHT:** 825  
**EST. WEIGHT RANGE:** 775-925  
**USDA GRADES:** 95% L-1 & M-1 5% L-2 & M-2  
**FLESH #:** 5

**DESCRIPTION:**  
59 Black & BB, 2 Red & RB, 2 Char X

Weaned June 10, 2024 or earlier. Home Raised by Angus, Hereford, or Sim-Angus bulls.

Few with Pinkeye scars.

**MANAGEMENT:**  
Cattle are on pasture plus 9-10# per head per day of 14% Commodity Mix feed and mineral.

2 shots each in neck—Vision 7, ENDOVAC-Beef  
1 shot each in neck—Pyramid 5 + Presponse, Pyramid 5

Dewormed with Longrange. Implanted with Ralgro in April 2024.

**CONDITIONS:**  
Cattle will be penned by 7:00 AM morning of weigh up in a dry lot. Buyers truck get tare wt by 7:00 AM and travel 20 miles to farm load and haul to Loves TS, off I-24, Exit 89 and weigh on truck with a 2% shrink.

**TAKE 48,000-50,000# LOAD OFF HEAVY END**  
Available August 5th—12th

**UPI REPRESENTATIVE:** Frank Poling

**SLIDE: Up Only:** 9 Cents



**PRICE/CWT:** \_\_\_\_\_

**BUYER:** \_\_\_\_\_

**Lot 24-126**

**OWNER:** Wayne Cantrell  
Smithville  
**BQA #:** TN #27441  
**# HEAD:** 49 Steers  
**EST. AVG. WEIGHT:** 825  
**EST. WEIGHT RANGE:** 725-925  
**USDA GRADES:** 90% M-1 10% M-2  
**FLESH #:** 5

**DESCRIPTION:**  
100% Black & BB

Weaned October 28, 2023. Home Raised by Angus bulls.

**PI NEGATIVE**

**MANAGEMENT:**  
Cattle are on pasture plus 9# per head per day of 14% Co-op Beef feed and Co-op mineral pack with Rumensin.

2 shots each—Inforce 3, Ultrabac 7  
1 shot each in neck— Bovishield Gold One Shot, Bovishield Gold 5



Dewormed with Longrange. No implants. Castrated with bands.

**CONDITIONS:**  
Cattle will be penned by 8:00 AM morning of weigh up in a dry lot. Buyers truck get tare wt by 8:00 AM and travel 35 miles to farm, load and haul to Love's TS, I-40, Exit 280 and weigh on truck with a 2% shrink.

**TAKE ALL**  
Available August 5th—12th

**UPI REPRESENTATIVE:** Richard Brown

**SLIDE: Up Only:** 9 Cents



**PRICE/CWT:** \_\_\_\_\_

**BUYER:** \_\_\_\_\_

**Lot 24-127**

**OWNER:** Heritage Livestock  
Bowling Green KY

**BQA #:**  
**# HEAD:** 143 Steers  
**EST. AVG. WEIGHT:** 850  
**EST. WEIGHT RANGE:** 800-900  
**USDA GRADES:** 90% L-1 & M-1 10% L-2 & M-2  
**FLESH #:** 5

**DESCRIPTION:**  
100% Black & BB

*Cattle put together since April 15, 2024.*

**PI NEGATIVE**

**MANAGEMENT:**  
Cattle are on pasture plus 18# per head per day of a TMR.

1 shot each in neck—Vision 7, Titanium 3, ENDOVAC-Beef

Dewormed with Cydectin. Implanted with Component TE-G.

**CONDITIONS:**  
Cattle will be penned by 7:00 AM morning of weigh up in a dry lot. Weighed at Heritage Livestock on the ground with a 2% shrink.

**TAKE 2/48,000-50,000# LOAD OFF HEAVY END**  
Available August 12th—16th—Seller's Option

**UPI REPRESENTATIVE:** Frank Poling

**SLIDE: Up Only:** 8 Cents



**PRICE/CWT:** \_\_\_\_\_

**BUYER:** \_\_\_\_\_

**Lot 24-128**

**OWNER:** Heritage Livestock  
Bowling Green KY

**BQA #:**  
**# HEAD:** 66 Steers  
**EST. AVG. WEIGHT:** 850  
**EST. WEIGHT RANGE:** 800-900  
**USDA GRADES:** 95% L-1 & M-1 5% L-2 & M-2  
**FLESH #:** 5

**DESCRIPTION:**  
100% Black & BB  
2 hd show 1/8 ear

*Cattle put together since April 2024.*

**PI NEGATIVE**

**MANAGEMENT:**  
Cattle are on pasture plus 18# per head per day of a TMR.

1 shot each in neck—Vision 7, Titanium 3, ENDOVAC-Beef

Dewormed with Cydectin. Implanted with Component TE-G.

**CONDITIONS:**  
Cattle will be penned by 7:00 AM morning of weigh up in a dry lot. Weighed at Heritage Livestock on the ground with a 2% shrink.

**TAKE 48,000-50,000# LOAD OFF HEAVY END**  
Available August 5th—9th—Seller's Option

**UPI REPRESENTATIVE:** Frank Poling

**SLIDE: Up Only:** 8 Cents



**PRICE/CWT:** \_\_\_\_\_

**BUYER:** \_\_\_\_\_



**Lot 24-129**

**OWNER:** Heritage Livestock  
Bowling Green KY

**BQA #:**  
**# HEAD:** 130 Steers  
**EST. AVG. WEIGHT:** 850  
**EST. WEIGHT RANGE:** 800-900  
**USDA GRADES:** 90% L-1 & M-1 10% L-2 & M-2  
**FLESH #:** 5

**DESCRIPTION:**  
80% Black & BB, 20% Red, RB, & Char X  
30% show 1/8 - 1/4 ear

*Cattle put together since June 1, 2024.*

**PI NEGATIVE**

5% of steers with 2-3" nubs.

**MANAGEMENT:**  
Cattle are on pasture plus 18# per head per day of a TMR.

1 shot each in neck— Vision 7, Titanium 3, ENDOVAC-Beef

Dewormed with Cydectin. Implanted with Component TE-G.

**CONDITIONS:**  
Cattle will be penned by 7:00 AM morning of weigh up in a dry lot. Weighed at Heritage Livestock on the ground with a 2% shrink.

**TAKE 2/48,000-50,000# LOAD OFF HEAVY END**  
**Available August 19th—23rd—Seller's Option**

**UPI REPRESENTATIVE:** Frank Poling

**SLIDE: Up Only:** 8 Cents



**PRICE/CWT:** \_\_\_\_\_

**BUYER:** \_\_\_\_\_

**Lot 24-130**

**OWNER:** Heritage Livestock  
Bowling Green KY

**BQA #:**  
**# HEAD:** 76 Steers  
**EST. AVG. WEIGHT:** 850  
**EST. WEIGHT RANGE:** 800-900  
**USDA GRADES:** 90% L-1 & M-1 10% L-2 & M-2  
**FLESH #:** 5

**DESCRIPTION:**  
66 Black & BB, 3 Red & RB, 7 Char X  
30% show 1/8 ear

*Cattle put together since June 1, 2024.*

**PI NEGATIVE**

2-3 steers with 2-3" nubs.

**MANAGEMENT:**  
Cattle are on pasture plus 18# per head per day of a TMR.

1 shot each in neck— Vision 7, Titanium 3, ENDOVAC-Beef

Dewormed with Cydectin. Implanted with Component TE-G.

**CONDITIONS:**  
Cattle will be penned by 7:00 AM morning of weigh up in a dry lot. Weighed at Heritage Livestock on the ground with a 2% shrink.

**TAKE 48,000-50,000# LOAD OFF HEAVY END**  
**Available August 5th—9th—Seller's Option**

**UPI REPRESENTATIVE:** Frank Poling

**SLIDE: Up Only:** 8 Cents



**PRICE/CWT:** \_\_\_\_\_

**BUYER:** \_\_\_\_\_

**Lot 24-131**

**OWNER:** David Denton  
Belvidere TN

**BQA #:**  
**# HEAD:** 70 Steers  
**EST. AVG. WEIGHT:** 850  
**EST. WEIGHT RANGE:** 800-925  
**USDA GRADES:** 90% L-1 & M-1 10% L-2 & M-2  
**FLESH #:** 5

**DESCRIPTION:**  
65 Black & BB, 1 RB (with 1 spot on side), 1 Charolais,  
1 Char X  
2 hd show 1/8 ear  
*Cattle put together 90+ days.*

Few with Pinkeye scars.

**MANAGEMENT:**  
Cattle are on 27# per head per day of a TMR including  
distillers grains, cottonseed, corn, and corn silage plus  
Gro-Tec mineral with Rumensin.

2 shots each in neck—Calvary 9, Pyramid 5 + Presponse

Dewormed with Noromectin Injectable.

**CONDITIONS:**  
Cattle will be penned by 7:00 AM morning of weigh up in a  
dry lot. Buyers truck get tare wt by 7:00 AM and travel 20  
miles to farm load and haul to the Truck Plaza, off I-24,  
Exit 114 and weigh on truck with a 2% shrink.

**TAKE 48,000-50,000# LOAD OFF HEAVY END**

**Available August 5th—12th**

**UPI REPRESENTATIVE:** Josh Woodward

**SLIDE: Up Only:** 9 Cents



**PRICE/CWT:** \_\_\_\_\_

**BUYER:** \_\_\_\_\_

**Lot 24-132**

**OWNER:** Bill Dixon  
Lawrenceburg TN

**BQA #:**  
**# HEAD:** 59 Steers  
**EST. AVG. WEIGHT:** 850  
**EST. WEIGHT RANGE:** 800-950  
**USDA GRADES:** 90% L-1 & M-1 10% L-2 & M-2  
**FLESH #:** 5

**DESCRIPTION:**  
50 Black & BB, 9 Red, RB, & Char X  
  
*Cattle put together in January 2024.*

Few with Pinkeye scars.

**MANAGEMENT:**  
Cattle are on pasture plus 6# per head per day ground ear  
corn with mineral.

1 shot each in neck—Bovishield Gold, 7-way Blackleg

Dewormed with Dectomax. No implants.

**CONDITIONS:**  
Cattle will be penned by 7:00 AM morning of weigh up in  
a dry lot. Buyers truck will get tare wt by 7:00 AM and  
travel 7 miles to the farm, load and haul to Roger's Group  
Lawrenceburg and weighed on the truck with a 2% shrink.

**TAKE 48,000-50,000# LOAD OFF HEAVY END**

**Available August 5th—12th**

**UPI REPRESENTATIVE:** Frank Poling

**SLIDE: Up Only:** 9 Cents



**PRICE/CWT:** \_\_\_\_\_

**BUYER:** \_\_\_\_\_

Lot 24-133

OWNER: Andrew Griffith  
Hampshire TN  
BQA #:   
# HEAD: 65 Steers  
EST. AVG. WEIGHT: 850  
EST. WEIGHT RANGE: 800-900  
USDA GRADES: 85% L-1 & M-1 15% L-2 & M-2  
FLESH #: 4 & 5

DESCRIPTION:  
75% Black & BB, 25% Red, RB, Char, & Char X  
2-3 hd show 1/2 ear

Cattle put together in Winter of 2023.

Few with Pinkeye scars. 2 steers with 4" tipped horns.

MANAGEMENT:  
Cattle are on pasture plus 5# per head per day of  
Commodity mix feed with mineral.

1 shot each in neck— Pyramid 5 + Presponse, BarVac 7+  
Somnus

Dewormed with Safeguard. Implanted with Synovex One  
Grower.

CONDITIONS:  
Cattle will be penned by 7:00 AM morning of weigh up in a  
dry lot. Hauled 18 miles to UPI Columbia Livestock Center  
by 9:00 AM and weighed on ground with a 1% shrink.

TAKE 48,000-50,000# LOAD OFF HEAVY END

Available August 6th, 8th—11th

UPI REPRESENTATIVE: Frank Poling

SLIDE: Up Only: 9 Cents



PRICE/CWT: \_\_\_\_\_

BUYER: \_\_\_\_\_

Lot 24-134

OWNER: Parker/Bryan/Loftis  
Morrison TN  
BQA #: TN #1630 /#2164  
# HEAD: 58 Steers  
EST. AVG. WEIGHT: 860  
EST. WEIGHT RANGE: 825-950  
USDA GRADES: 95% L-1 & M-1 5% L-2 & M-2  
FLESH #: 5



DESCRIPTION:  
100% Black & BB  
(Includes option on 1 RB)

Weaned May 2024. Home Raised by Angus or Hereford  
bulls.

CATTLE ARE NOT RUNNING TOGETHER

MANAGEMENT:  
Cattle are on pasture plus 6# per head per day of 14%  
Commodity feed and Co-op Supreme mineral.

2 shots each in neck—Vision 7/Somnus

1 shot each in neck—Pyramid 5 + Presponse, Boostered  
Pyramid 5

Dewormed with Longrange or Dectomax. Castrated with  
knife.

CONDITIONS:  
Cattle will be penned by 7:00 AM morning of weigh up in a  
dry lot. Hauled 10 miles to Summitville Cattle Co by 9:00  
AM and weighed with a 2% shrink.

TAKE 48,000-50,000# LOAD OFF HEAVY END

Available August 5th—7th

MUST LOAD BEFORE LOT 24-119

UPI REPRESENTATIVE: Richard Brown

SLIDE: Up Only: 9 Cents



PRICE/CWT: \_\_\_\_\_

BUYER: \_\_\_\_\_

## Lot 24-135

OWNER: Wayside Farms  
Shelbyville TN



BQA #:  
# HEAD: 60 Steers  
EST. AVG. WEIGHT: 875  
EST. WEIGHT RANGE: 800-925  
USDA GRADES: 90% L-1 & M-1 10% L-2 & M-2  
FLESH #: 5

DESCRIPTION:  
48 Black & BB, 2 Red & RB, 10 Char X

*Cattle put together October 2023.*

Few with Pinkeye scars. 1 with blue eye.

### MANAGEMENT:

Cattle are on pasture/hay and silage plus 5# per head per day of #94176PE 14% Co-op Beef pellet and free choice #678 Co-op Supreme mineral.

### November/December 2023:

**2 shots each in neck**—Covexin 8

**1 shot each in neck**—Express 5-HS, Pyramid 5 + Presponse SQ, I-Site XP

Dewormed with Eprinex Pour-On. Implanted with Ralgro.

### **Booster Shots—6/25/2024**

Pyramid 5 + Presponse SQ, Bar-Vac 7/Somnus, and dewormed with Noromectin Injectable.

### CONDITIONS:

Cattle will be penned at 7:00 AM morning of weigh up in a dry lot. Hauled 15 miles to Gilmore Livestock by 9:00 AM and weighed with a **1% shrink**.

**TAKE 48,000-50,000# LOAD OFF HEAVY END**

**Available August 6th—9th**

UPI REPRESENTATIVE: Richard Brown

SLIDE: Up Only: 9 Cents



PRICE/CWT: \_\_\_\_\_

BUYER: \_\_\_\_\_

## Lot 24-136

OWNER: Gray Hollow Farms  
Winchester TN

BQA #:  
# HEAD: 60 Steers  
EST. AVG. WEIGHT: 875  
EST. WEIGHT RANGE: 800-950  
USDA GRADES: 80% L-1 & M-1 20% L-2 & M-2  
FLESH #: 5

DESCRIPTION:  
80% Black & BB, 20% Red, RB, & Char X  
(Includes 2 Herefords)  
5 hd with 1/8 ear or less

*Cattle put together 90+ days.*

1 Hereford with turned down horns.

### MANAGEMENT:

Cattle are on hay plus 6.5# per head per day of corn cleanings, distillery syrup, and mineral mix.

**2 shots each in neck**—Bovishield Gold, Blackleg, Tetanus

Dewormed with Safeguard and Ivomec Pour-On. Implanted with Ralgro.

### CONDITIONS:

Cattle will be penned by 7:00 AM morning of weigh up in a dry lot. Buyers truck get tare wt by 7:00 AM and travel 30 miles to farm, load and haul to Jack Daniels Distillery and weigh on truck with a **2% shrink**. Cattle can be weighed at Exit 114, Truck Plaza in Manchester.

**TAKE 48,000-50,000# LOAD OFF HEAVY END**

**Available August 5th—12th**

UPI REPRESENTATIVE: Josh Woodward

SLIDE: Up Only: 9 Cents



PRICE/CWT: \_\_\_\_\_

BUYER: \_\_\_\_\_

**Lot 24-137**

**OWNER:** Ray Farms  
Tullahoma TN  
**BQA #:** TN #1715  
**# HEAD:** 60 Steers  
**EST. AVG. WEIGHT:** 890  
**EST. WEIGHT RANGE:** 825-950  
**USDA GRADES:** 95% L-1 & M-1 5% L-2 & M-2  
**FLESH #:** 5 few 6

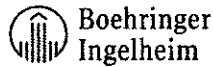
**DESCRIPTION:**  
100% Black & BB

**PI NEGATIVE**

1 steer with few warts.

**MANAGEMENT:**  
Cattle are on pasture and hay plus wet stillage and 3# per head per day of Co-op pellets stillage booster with ProSolution mineral with Rumensin.

1 shot each in neck—Pyramid 5+Presponse, Pyramid 5, Bar-Vac 7



Dewormed and deloused with Eprinex. Implanted with Component TE-G. Castrated with knife.

**CONDITIONS:**  
Cattle will be penned by 7:00 AM morning of weigh up in a dry lot. Buyers truck get tare wt by 7:00 AM and travel 30 miles to farm, load and haul to Jack Daniels Distillery and weigh on truck with a 2% shrink. Cattle can be weighed at Exit 114, Truck Plaza in Manchester.

**TAKE 48,000-50,000# LOAD OFF HEAVY END**

**Truck must weigh on a 70' scale - NO SPLIT WEIGHING**

**Available August 5th—12th**

**UPI REPRESENTATIVE:** Frank Poling

**SLIDE: Up Only:** 9 Cents



**PRICE/CWT:** \_\_\_\_\_

**BUYER:** \_\_\_\_\_

**Lot 24-138**

**OWNER:** Ray Farms  
Tullahoma TN  
**BQA #:** TN #1715  
**# HEAD:** 60 Steers  
**EST. AVG. WEIGHT:** 950  
**EST. WEIGHT RANGE:** 850-975  
**USDA GRADES:** 90% L-1 & M-1 10% L-2 & M-2  
**FLESH #:** 5 & 6

**DESCRIPTION:**  
40 Black & BB, 8 Red, 12 Char X

**PI NEGATIVE**

1-2 steers with warts.

**MANAGEMENT:**  
Cattle are on pasture and hay plus wet stillage and 3# per head per day of Co-op pellets stillage booster with ProSolution mineral with Rumensin.

1 shot each in neck—Pyramid 5+Presponse, Pyramid 5, Bar-Vac 7



Dewormed and deloused with Eprinex. Implanted with Component TE-G. Castrated with knife.

**CONDITIONS:**  
Cattle will be penned by 7:00 AM morning of weigh up in a dry lot. Buyers truck get tare wt by 7:00 AM and travel 30 miles to farm, load and haul to Jack Daniels Distillery and weigh on truck with a 2% shrink. Cattle can be weighed at Exit 114, Truck Plaza in Manchester.

**TAKE 48,000-50,000# LOAD OFF HEAVY END**

**Truck must weigh on a 70' scale - NO SPLIT WEIGHING**

**Available August 5th—12th**

**UPI REPRESENTATIVE:** Frank Poling

**SLIDE: Up Only:** 8 Cents



**PRICE/CWT:** \_\_\_\_\_

**BUYER:** \_\_\_\_\_

**Lot 24-139**

**OWNER:** Wilhelm Farms  
Shelbyville TN

**BQA #:**  
**# HEAD:** 58 Steers  
**EST. AVG. WEIGHT:** 950  
**EST. WEIGHT RANGE:** 875-1025  
**USDA GRADES:** 85% L-1 & M-1 15% L-2 & M-2  
**FLESH #:** 5 few 6

**DESCRIPTION:**  
46 Black & BB, 8 Red & Char X, 2 Herefords, 2 Shorthorns  
2-3 hd show ¼ ear or less

*Cattle put together 90+ days.*

Couple with tipped horns.

**MANAGEMENT:**  
Cattle are on pasture, hay, and free choice distillage with mineral.

2 shots each in neck—Covexin 8, Bovishield Gold,  
Boostered with Bovishield Gold One Shot

1 shot each in neck— Vista Once

Dewormed with Safeguard and Ivomec Pour-On.

**CONDITIONS:**  
Cattle will be penned by 7:00 AM morning of weigh up in a dry lot. Buyers truck get tare wt by 7:00 AM and travel 30 miles to farm, load and haul to Love’s TS, Exit 46, off I-65, and weigh on the truck with a 2% shrink.

**TAKE 48,000-50,000# LOAD OFF HEAVY END**

**Available August 5th—12th**

**UPI REPRESENTATIVE:** Frank Poling

**SLIDE: Up Only:** 8 Cents



**PRICE/CWT:** \_\_\_\_\_

**BUYER:** \_\_\_\_\_

**Lot 24-140**

**OWNER:** Wet Stone Creek Inc  
Brownsville KY

**BQA #:** KY CERTIFIED  
**# HEAD:** 55 Steers  
**EST. AVG. WEIGHT:** 965  
**EST. WEIGHT RANGE:** 915-1015  
**USDA GRADES:** 90% L-1 & M-1 10% L-2 & M-2  
**FLESH #:** 5

**DESCRIPTION:**  
100% Black & BB

*Cattle put together 100+ days.*

**PI NEGATIVE**

**MANAGEMENT:**  
Cattle are on pasture plus 20# per head per day of a TMR consisting of haylage, hominy, and wet distillers’ grain plus Burkmann’s mineral with Rumensin.

1 shot each—Inforce 3, Somubac, One Shot BVD

Dewormed with Ivomec. Implanted with Synovex-C on March 13, 2024. Castrated with bands.

**CONDITIONS:**  
Cattle will be penned by 8:30 AM morning of weigh up in a dry lot. Buyers truck get tare wt by 8:30 AM and travel 25 miles to farm, load and haul to Smith’s Grove TA, I-65, Exit 38 and weigh on truck with a 2% shrink.

**TAKE ALL**

**Available August 6th—9th**

**UPI REPRESENTATIVE:** Brian Lovell

**SLIDE: Up Only:** 8 Cents



**PRICE/CWT:** \_\_\_\_\_

**BUYER:** \_\_\_\_\_

## Lot 24-141

**OWNER:** Wet Stone Creek Inc  
Brownsville KY

**BQA #:** KY CERTIFIED

**# HEAD:** 55 Steers

**EST. AVG. WEIGHT:** 965

**EST. WEIGHT RANGE:** 900-1015

**USDA GRADES:** 90% L-1 & M-1 10% L-2 & M-2

**FLESH #:** 5

**DESCRIPTION:**

24 Black & BB, 11 Red, 4 RB, 1 Charolais, 9 Char X,  
5 Crossbreds, 1 Black Hereford

*Cattle put together 100+ days.*

**PI NEGATIVE**

**MANAGEMENT:**

Cattle are on pasture plus 20# per head per day of a TMR consisting of haylage, hominy, and wet distillers' grain plus Burkmann's mineral with Rumensin.

**1 shot each**—Inforce 3, Somubac, One Shot BVD

Dewormed with Ivomec. Implanted with Synovex-C on March 1, 2024. Castrated with bands.

**CONDITIONS:**

Cattle will be penned by 8:30 AM morning of weigh up in a dry lot. Buyers truck get tare wt by 8:30 AM and travel 25 miles to farm, load and haul to Smith's Grove TA, I-65, Exit 38 and weigh on truck with a **2% shrink**.

**TAKE ALL**

Available August 6th—9th

**UPI REPRESENTATIVE:** Brian Lovell

**SLIDE: Up Only:** 8 Cents



**PRICE/CWT:** \_\_\_\_\_

**BUYER:** \_\_\_\_\_

## Lot 24-142

**OWNER:** West Farms  
Columbia TN

**BQA #:** TN #280

**# HEAD:** 55 Steers

**EST. AVG. WEIGHT:** 985

**EST. WEIGHT RANGE:** 900-1025

**USDA GRADES:** 95% L-1 & M-1 5% L-2 & M-2

**FLESH #:** 5

**DESCRIPTION:**

90% Black & BB, 10% Red, RB, & Char X  
1 hd with 1/8 ear

*Cattle put together 120+ days. **50% Home Raised by Angus bulls.***

Couple with 3" nubs.

**MANAGEMENT:**

Cattle are on pasture and hay plus 12# per head per day of Commodity blend feed with mineral.

**1 shot each**— Nasalgen 3 PMH, Boostered with Bovishield Gold 5, 7 Way Blackleg

Dewormed with Longrange. Implanted with Ralgro.

**CONDITIONS:**

Cattle will be penned by 8:00 AM morning of weigh up in a dry lot. Buyers trucks get tare wt by 8:00 AM and travel 20 miles to farm, load and haul to Pilot TS, Exit 172, off I-40 and weigh on the truck with a **2% shrink**.

**TAKE 48,000-50,000# LOAD OFF HEAVY END**

Available August 5th—12th

**UPI REPRESENTATIVE:** Frank Poling

**SLIDE: Up Only:** 8 Cents



**PRICE/CWT:** \_\_\_\_\_

**BUYER:** \_\_\_\_\_

**Lot 24-143**

**OWNER:** Ralston Farms  
Rockvale TN

**BQA #:**  
**# HEAD:** 110 Steers  
**EST. AVG. WEIGHT:** 1000  
**EST. WEIGHT RANGE:** 925-1100  
**USDA GRADES:** 95% L-1 & M-1 5% L-2 & M-2  
**FLESH #:** 5

**DESCRIPTION:**  
92 Black & BB, 4 Red & RB, 14 Char X  
5% show 1/8 ear

Weaned Fall of 2023. 95% Home Raised by Angus bulls.

**MANAGEMENT:**  
Cattle are on pasture and 10# per head per day of  
haylage with 2# per head per day of corn plus mineral.

2 shots each in neck—Blackleg  
1 shot each in neck— Pyramid 5 + Presponse, Pyramid 5,

Dewormed with Longrange. No implants.

**CONDITIONS:**  
Cattle will be penned by 7:00 AM morning of weigh up in a  
dry lot. Cattle will be weighed at Ralston Farm scales and  
weighed on the ground with a 2% shrink.

**TAKE 2/48,000-50,000# LOAD OFF HEAVY END**

**Available August 5th -12th**

**CANNOT LOAD SAME DAY AS LOT 24-154 & 24-155**

**UPI REPRESENTATIVE:** Frank Poling

**SLIDE: Up Only:** 6 Cents



**PRICE/CWT:** \_\_\_\_\_

**BUYER:** \_\_\_\_\_





Follow us



# Performance Feeds




Serving the Southeastern United States

Specializing In:

- Complete Feeds
- Premixes
- Supplements
- Minerals
- Low Moisture Tubs
- Commodities
- Animal Health Supplies

We Deliver High Quality Livestock Feeds  
at the **Lowest Possible Cost to the Producer.**



Contact Us Today at 866-699-5080  
Or Visit Us on the Web at [www.performance-feeds.com](http://www.performance-feeds.com)

**INFORCE™ 3**

**ONE SHOT®  
BVD**

Complete respiratory protection

INFORCE™ 3 & ONE SHOT® BVD give you a lot of &s when it comes to calf immunization.

It begins with intranasal INFORCE 3 & the rapid innate & active immunity it provides where IBR, BRSV & PI<sub>3</sub> respiratory diseases start & continues with immune system priming against future exposure. Plus, when you administer ONE SHOT BVD subcutaneously, your calves receive superior Type 1 BVD & Type 2 BVD & *Mannheimia haemolytica* protection.

Because when you start with a balanced immunization program, you help calves stay healthy & grow to their potential & prevent the spread of diseases & earn a better price at market & ... well, you get the picture.

**Learn more by contacting your local Zoetis representative or visiting [CompleteCalfProtection.com](http://CompleteCalfProtection.com).**

All trademarks are the property of Zoetis Inc., its affiliates and/or its licensors.  
© 2016 Zoetis Inc. All rights reserved. INF-00025

**zoetis**

Lot 24-144

OWNER: Graff/Mason/Brown/Lee/Dixon  
Livingston TN  
BQA #: TN #1996/#3823  
# HEAD: 80 Heifers  
EST. AVG. WEIGHT: 660  
EST. WEIGHT RANGE: 600-800  
USDA GRADES: 90% L-1 & M-1 10% L-2 & M-2  
FLESH #: 5



DESCRIPTION:  
71 Black & BB, 6 Char X, 3 Red

Weaned 60-90+ days. Home Raised by Angus or Hereford bulls.

**GUARANTEED OPEN**

CATTLE ARE NOT RUNNING TOGETHER.

MANAGEMENT:  
Cattle are on pasture plus 12% Commodity blend feed and free choice mineral with Rumensin.

2 shots each in neck—Bar-Vac 7/Somnus or Ultrabac 7/  
Somnus or Alpha 7

1 shot each in neck—Pyramid 5 + Presponse SQ  
(Boostered with Pyramid 5) or Bovishield Gold 5  
(Boostered with Bovishield Gold 5)

Dewormed with Dectomax or Cydectin.

CONDITIONS:  
Cattle will be penned by 7:00 AM morning of weigh up in a dry lot. Hauled 15 miles to JB Cattle Co in Rickman, TN by 10:00 AM and weighed on the ground with a 2% shrink.  
**CAN BE PREG CHECKED AFTER WEIGH UP PRIOR TO LOADING AT SELLERS EXPENSE—3 DAY NOTICE REQUIRED.**

**TAKE 48,000-50,000# LOAD OFF HEAVY END**

Available August 12th—16th

UPI REPRESENTATIVE: Richard Brown

SLIDE: Up Only: 10 Cents



PRICE/CWT: \_\_\_\_\_

BUYER: \_\_\_\_\_

Lot 24-145

OWNER: Dacosta & Fuller  
Wartrace TN  
BQA #: TN #496  
# HEAD: 75 Heifers  
EST. AVG. WEIGHT: 675  
EST. WEIGHT RANGE: 600-775  
USDA GRADES: 90% L-1 & M-1 10% L-2 & M-2  
FLESH #: 5 few 4

DESCRIPTION:  
66 Black & BB, 4 Red & RB, 5 Char X

Weaned June 10, 2024 or earlier. Home Raised by Angus, Hereford, or Sim-Angus bulls.

Few with Pinkeye scars.

MANAGEMENT:  
Cattle are on pasture plus 9-10# per head per day of 14% Commodity Mix feed and mineral.

2 shots each in neck—Vision 7, ENDOVAC-Beef

1 shot each in neck—Pyramid 5 + Presponse, Pyramid 5,  
Lutalyse

Dewormed with Longrange. No implants.

CONDITIONS:  
Cattle will be penned by 7:00 AM morning of weigh up in a dry lot. Buyers truck get tare wt by 7:00 AM and travel 20 miles to farm load and haul to Loves TS, off I-24, Exit 89 and weigh on truck with a 2% shrink. **CAN BE PREG CHECKED, AFTER WGH UP, PRIOR TO SHIPMENT AT BUYERS EXPENSE—3 DAY NOTICE REQUIRED.**

**TAKE 48,000-50,000# LOAD OFF HEAVY END**

Available August 5th—12th

UPI REPRESENTATIVE: Frank Poling

SLIDE: Up Only: 10 Cents



PRICE/CWT: \_\_\_\_\_

BUYER: \_\_\_\_\_

**Lot 24-146**

**OWNER:** Gatlin Brandon  
Tazewell TN  
**BQA #:** TN CERTIFIED  
**# HEAD:** 100 Heifers  
**EST. AVG. WEIGHT:** LOAD: 715 ALL: 700  
**EST. WEIGHT RANGE:** 625-775  
**USDA GRADES:** 95% L-1 & M-1 5% L-2 & M-2  
**FLESH #:** 5

**DESCRIPTION:**  
100% Black & BB

Weaned July 6, 2024. Home Raised by Angus bulls. AI Sired by Guarantee or naturally sired by sons of Growth Fund and Sure Fire.

**SEVERAL REPLACEMENT QUALITY HEIFERS**

**MANAGEMENT:**  
Cattle are on pasture plus Commodity blend of corn, soyhull pellets, corn gluten with Rumensin.

2 shots each in neck— Triangle 5  
1 shot each in neck— Vision 7, Pyramid 5 + Presponse SQ

Dewormed with Cydectin in the Spring and Safeguard at weaning.

**CONDITIONS:**  
Cattle will be penned by 7:00 AM morning of weigh up in a dry lot. Weighed on the ground at the farm scales by 10:00 AM with a 2% shrink.

**TAKE 48,000-50,000# LOAD OFF HEAVY END OR TAKE ALL**

Available August 20th—27th

**PREFER TO LOAD SAME DAY AS LOT 24-120**

**UPI REPRESENTATIVE:** Jonathan Trew

**SLIDE: Up Only:** 10 Cents



**PRICE/CWT:** \_\_\_\_\_

**BUYER:** \_\_\_\_\_

**Lot 24-147**

**OWNER:** Ronnie Parker  
Morrison TN  
**BQA #:** #2164  
**# HEAD:** 45+/- Heifers  
**EST. AVG. WEIGHT:** 700  
**EST. WEIGHT RANGE:** 650-800  
**USDA GRADES:** 95% L-1 & M-1 5% L-2 & M-2  
**FLESH #:** 5



**DESCRIPTION:**  
100% Black & BB

Weaned May 2024. Home Raised by Angus or Hereford bulls.

**REPLACEMENT QUALITY HEIFERS**

Heifers have had a shot of Lutalyse

**MANAGEMENT:**  
Cattle are on pasture plus 6# per head per day of 14% Commodity blend feed and Co-op Supreme mineral.

2 shots each in neck—Vision 7/Somnus  
1 shot each in neck—Pyramid 5 + Presponse, Boostered with Pyramid 5

Dewormed with Longrange.

**CONDITIONS:**  
Cattle will be penned by 7:00 AM morning of weigh up in a dry lot. Hauled 10 miles to Summitville Cattle Co by 9:00 AM and weighed with a 2% shrink. **CAN BE PREG CHECKED, AFTER WGH UP, PRIOR TO SHIPMENT AT BUYERS EXPENSE—3 DAY NOTICE REQUIRED.**

**TAKE ALL**

Available August 12th—16th

**UPI REPRESENTATIVE:** Richard Brown

**SLIDE: Up Only:** 10 Cents



**PRICE/CWT:** \_\_\_\_\_

**BUYER:** \_\_\_\_\_

Lot 24-148

OWNER: Bill Thrasher  
Culleoka TN



BQA #: TN #20818

# HEAD: 45+/- Heifers

EST. AVG. WEIGHT: 700

EST. WEIGHT RANGE: 650-775

USDA GRADES: 90% L-1 & M-1 10% L-2 & M-2

FLESH #: 5

DESCRIPTION:

33 Black & BB, 4 Red & RB, 7 Char X, 1 Hereford  
1 with 1/8 ear

Weaned June 1, 2024 or earlier. Home Raised by Registered Angus or Hereford bulls.

PI NEGATIVE

Couple with 3" horns.

MANAGEMENT:

Cattle are on pasture and 6# per head per day of 14% Coarse feed plus mineral.

2 shots each in neck — Alpha 7 MB-1, Express 5 HS

1 shot each in neck—Presponse HM, Lutalyse

Dewormed with Eprinex Pour On.

CONDITIONS:

Cattle will be penned by 7:00 AM morning of weigh up in a dry lot. Hauled 12 miles to UPI Columbia Livestock Center by 9:00 AM and weigh on ground with a 2% shrink. **CAN BE PREG CHECKED, AFTER WGH UP, PRIOR TO SHIPMENT AT BUYERS EXPENSE—3 DAY NOTICE REQUIRED.**

TAKE ALL

Available August 6th, 8th—11th

UPI REPRESENTATIVE: Frank Poling

SLIDE: Up Only: 10 Cents



PRICE/CWT: \_\_\_\_\_

BUYER: \_\_\_\_\_

Lot 24-149

OWNER: Heritage Livestock  
Bowling Green KY

BQA #:

# HEAD: 200 Heifers

EST. AVG. WEIGHT: 750

EST. WEIGHT RANGE: 700-800

USDA GRADES: 90% L-1 & M-1 10% L-2 & M-2

FLESH #: 5

DESCRIPTION:

100% Black & BB

*Cattle put together since March 2024.*

PI NEGATIVE

MANAGEMENT:

Cattle are on pasture plus 18# per head per day of a TMR.

1 shot each in neck—Vision 7, Titanium 3, ENDOVAC-Beef

Dewormed with Cydectin. Implanted with Component TE-G.

CONDITIONS:

Cattle will be penned by 7:00 AM morning of weigh up in a dry lot. Weighed at Heritage Livestock on the ground with a 2% shrink. **CAN BE PREG CHECKED, AFTER WGH UP, PRIOR TO SHIPMENT AT BUYERS EXPENSE—MUST KNOW DAY OF SALE IF BUYER WANTS THEM CHECKED.**

TAKE 3/48,000-50,000# LOAD OFF HEAVY END

Available October 14th—21st—Seller's Option

UPI REPRESENTATIVE: Frank Poling

SLIDE: Up Only: 8 Cents



PRICE/CWT: \_\_\_\_\_

BUYER: \_\_\_\_\_

Lot 24-150

OWNER: Rob & Erin Marks  
Fayetteville TN



BQA #: TN #20932

# HEAD: 66 Heifers

EST. AVG. WEIGHT: 835

EST. WEIGHT RANGE: 750-900

USDA GRADES: 95% L-1 & M-1 5% L-2 & M-2

FLESH #: 5

DESCRIPTION:

100% Black

25% Home Raised by Angus or Sim-Angus bulls. Cattle were put together as 4 wts in March of 2024.

PI NEGATIVE

MANAGEMENT:

Cattle are on pasture plus 12# per head per day of 14% Co-op Beef Coarse feed and Co-op #678 Supreme mineral.

2 shots each in neck—Express HS

1 shot each in neck—Alpha 7 MB-1, Presponse HM, Pinkeye, Lutalyse

Dewormed with Eprinex. No implants.

CONDITIONS:

Cattle will be penned by 7:00 AM morning of weigh up in a dry lot. Hauled 15 miles to UPI Fayetteville Livestock Center and weighed on the ground with a 1% shrink. **CAN BE PREG CHECKED, AFTER WGH UP, PRIOR TO SHIPMENT AT BUYERS EXPENSE—3 DAY NOTICE REQUIRED.**

TAKE 48,000-50,000# LOAD OFF HEAVY END

Available August 12th, 14th—16th

UPI REPRESENTATIVE: Jimmy Jennings

SLIDE: Up Only: 9 Cents



PRICE/CWT: \_\_\_\_\_

BUYER: \_\_\_\_\_

Lot 24-151

OWNER: West Farms  
Columbia TN

BQA #: TN #280

# HEAD: 65 Heifers

EST. AVG. WEIGHT: 835

EST. WEIGHT RANGE: 775-900

USDA GRADES: 95% L-1 & M-1 5% L-2 & M-2

FLESH #: 5

DESCRIPTION:

90% Black & BB, 10% Red, RB, & Char X  
1-2 hd with 1/8 ear

50% Home Raised by Angus bulls. Cattle put together 120+ days.

MANAGEMENT:

Cattle are on pasture and hay plus 12# per head per day of Commodity blend feed with mineral.

1 shot each—Nasalgen 3 PMH, Boostered with Bovishield Gold 5, 7 Way Blackleg

Dewormed with Longrange. Implanted with Ralgro.

CONDITIONS:

Cattle will be penned by 7:00 AM morning of weigh up in a dry lot. Hauled 6 miles to UPI Columbia Livestock Center by 9:00 AM and weigh on ground with a 2% shrink. **CAN BE PREG CHECKED, AFTER WGH UP, PRIOR TO SHIPMENT AT BUYERS EXPENSE—3 DAY NOTICE REQUIRED.**

TAKE 48,000-50,000# LOAD OFF HEAVY END

Available August 6th, 8th—11th

UPI REPRESENTATIVE: Frank Poling

SLIDE: Up Only: 9 Cents



PRICE/CWT: \_\_\_\_\_

BUYER: \_\_\_\_\_

**Lot 24-152**

**OWNER:** Breezy Hilltop Farm  
Mulberry TN

**BQA #:**  
**# HEAD:** 62 Heifers  
**EST. AVG. WEIGHT:** 835  
**EST. WEIGHT RANGE:** 775-900  
**USDA GRADES:** 90% L-1 & M-1 10% L-2 & M-2  
**FLESH #:** 5 few 6

**DESCRIPTION:**  
53 Black & BB, 5 Red & RB, 4 Char X  
2-3 show 1/8 ear  
*Cattle put together in February 2024.*

Few with Pinkeye scars.

**MANAGEMENT:**  
Cattle are on pasture and hay plus wet distillage with mineral.

2 shots each in neck—Vision 7+Somnus, Pinkeye, Pyramid 5

1 shot each in neck—Multimin 90, Pastuerella, Lutalyse

Dewormed with Dectomax. Implanted with Synovex-H in March 2024.

**CONDITIONS:**  
Cattle will be penned by 7:00 AM morning of weigh up in a dry lot. Buyers truck get tare wt by 7:00 AM and travel 20 miles to farm load and haul to the Truck Plaza, off I-24, Exit 114 and weigh on truck with a 2% shrink. **CAN BE PREG CHECKED, AFTER WGH UP, PRIOR TO SHIPMENT AT BUYERS EXPENSE—3 DAY NOTICE REQUIRED.**

**TAKE 48,000-50,000# LOAD OFF HEAVY END**

**Available August 5th—12th**

**MUST LOAD SAME DAY AS LOT 24-153**

**UPI REPRESENTATIVE:** Frank Poling

**SLIDE: Up Only:** 9 Cents



**PRICE/CWT:** \_\_\_\_\_

**BUYER:** \_\_\_\_\_

**Lot 24-153**

**OWNER:** Breezy Hilltop Farm  
Mulberry TN

**BQA #:**  
**# HEAD:** 120 Heifers  
**EST. AVG. WEIGHT:** 875  
**EST. WEIGHT RANGE:** 800-950  
**USDA GRADES:** 90% L-1 & M-1 10% L-2 & M-2  
**FLESH #:** 5 few 6

**DESCRIPTION:**  
102 Black & BB, 8 Red & RB, 10 Char X  
*Cattle put together in February 2024.*

Few with Pinkeye scars.

**MANAGEMENT:**  
Cattle are on pasture and hay plus wet distillage with mineral.

2 shots each in neck—Vision 7+Somnus, Pinkeye, Pyramid 5

1 shot each in neck—Multimin 90, Pastuerella, Lutalyse

Dewormed with Dectomax. Implanted with Synovex-H in March 2024.

**CONDITIONS:**  
Cattle will be penned by 7:00 AM morning of weigh up in a dry lot. Buyers truck get tare wt by 7:00 AM and travel 20 miles to farm load and haul to the Truck Plaza, off I-24, Exit 114 and weigh on truck with a 2% shrink. **CAN BE PREG CHECKED, AFTER WGH UP, PRIOR TO SHIPMENT AT BUYERS EXPENSE—3 DAY NOTICE REQUIRED.**

**TAKE 2/48,000-50,000# LOAD OFF HEAVY END**

**Available August 5th—12th**

**MUST LOAD SAME DAY AS LOT 24-152**

**UPI REPRESENTATIVE:** Frank Poling

**SLIDE: Up Only:** 9 Cents



**PRICE/CWT:** \_\_\_\_\_

**BUYER:** \_\_\_\_\_



**Lot 24-154**

**OWNER:** Ralston Farms  
Rockvale TN

**BQA #:**  
**# HEAD:** 64 Heifers  
**EST. AVG. WEIGHT:** 935  
**EST. WEIGHT RANGE:** 850-1000  
**USDA GRADES:** 100% L-1 & M-1  
**FLESH #:** 5 few 6

**DESCRIPTION:**  
100% Black & BB

Weaned Fall of 2023. 60% Home Raised by Angus bulls.

Few with Pinkeye scars.

**MANAGEMENT:**  
Cattle are on pasture and 10# per head per day of haylage with 2# per head per day of corn plus mineral.

2 shots each in neck—Blackleg

1 shot each in neck—Pyramid 5 + Presponse, Pyramid 5

Dewormed with Longrange. No implants.

**CONDITIONS:**  
Cattle will be penned by 7:00 AM morning of weigh up in a dry lot. Cattle will be weighed on the ground at Ralston Farm scales with a 2% shrink. **CAN BE PREG CHECKED, AFTER WGH UP, PRIOR TO SHIPMENT AT BUYERS EXPENSE —3 DAY NOTICE REQUIRED.**

**TAKE 48,000-50,000# LOAD OFF HEAVY END**

**Available August 5th –12th**

**MUST LOAD AFTER LOT 24-155**

**CANNOT LOAD SAME DAY AS LOT 24-143 & 24-155**

**UPI REPRESENTATIVE:** Frank Poling

**SLIDE: Up Only:** 8 Cents



**PRICE/CWT:** \_\_\_\_\_

**BUYER:** \_\_\_\_\_

**Lot 24-155**

**OWNER:** Ralston Farms  
Rockvale TN

**BQA #:**  
**# HEAD:** 55 Heifers  
**EST. AVG. WEIGHT:** 1050  
**EST. WEIGHT RANGE:** 950-1125  
**USDA GRADES:** 100% L-1 & M-1  
**FLESH #:** 6 few 5

**DESCRIPTION:**  
49 Black & BB, 1 RB, 5 Char X

Weaned Fall of 2023. 95% Home Raised by Angus bulls.

Few with Pinkeye scars.

**MANAGEMENT:**  
Cattle are on pasture and 10# per head per day of haylage with 2# per head per day of corn plus mineral.

2 shots each in neck—Blackleg

1 shot each in neck—Pyramid 5 + Presponse, Pyramid 5

Dewormed with Longrange. No implants.

**CONDITIONS:**  
Cattle will be penned by 7:00 AM morning of weigh up in a dry lot. Cattle will be weighed at Ralston Farm scales and weighed on the ground with a 2% shrink. **CAN BE PREG CHECKED, AFTER WGH UP, PRIOR TO SHIPMENT AT BUYERS EXPENSE—3 DAY NOTICE REQUIRED.**

**TAKE 48,000-50,000# LOAD OFF HEAVY END**

**Available August 5th –12th**

**MUST LOAD BEFORE LOT 24-154**

**CANNOT LOAD SAME DAY AS LOT 24-143 & 24-154**

**UPI REPRESENTATIVE:** Frank Poling

**SLIDE: Up Only:** 6 Cents



**PRICE/CWT:** \_\_\_\_\_

**BUYER:** \_\_\_\_\_

# PROVEN.

## YOUR EXPANDED FAMILY OF CATTLE MINERALS.

FEEDS • KNOW-HOW • CARE

**CO-OP**

 **PURINA**



[protritionfeed.com](http://protritionfeed.com)

# PROTRITION®

— PROVEN ANIMAL NUTRITION & CARE SOLUTIONS —



Cattle First.



5% Sterile Solution Extended-Release Injectable  
For Subcutaneous Use  
Parasiticide for Cattle on Pasture

For the Treatment and Control of Internal and External Parasites of Cattle on Pasture with Persistent Effectiveness

Not for use in female dairy cattle 20 months of age or older, including dry dairy cows. Not for use in calves to be processed for veal.

Not for use in breeding bulls, or in calves less than 3 months of age.

Not for use in cattle managed in feedlots or under intensive rotational grazing.

Caution: Federal law restricts this drug to use by or on the order of a licensed veterinarian.

INDICATIONS FOR USE

LONGRANGE, when administered at the recommended dose volume of 1 mL per 110 lb (50 kg) body weight, is effective in the treatment and control of the following internal and external parasites of cattle:

Gastrointestinal Roundworms	Lungworms
<i>Bunostomum phlebotomum</i> – Adults and L <sub>4</sub>	
<i>Cooperia oncophora</i> – Adults and L <sub>4</sub>	<i>Dictyoaculus viviparus</i> – Adults
<i>Cooperia punctata</i> – Adults and L <sub>4</sub>	
<i>Cooperia surnabada</i> – Adults and L <sub>4</sub>	<b>Grubs</b>
<i>Haemonchus placei</i> – Adults	
<i>Oesophagostomum radiatum</i> – Adults	<i>Hypoderma bovis</i>
<i>Ostertagia lyrata</i> – Adults	
<i>Ostertagia ostertagi</i> – Adults, L <sub>4</sub> and inhibited L <sub>4</sub>	<b>Mites</b>
<i>Trichostrongylus axei</i> – Adults and L <sub>4</sub>	
<i>Trichostrongylus colubriformis</i> – Adults	<i>Sarcoptes scabiei</i> var. <i>bovis</i>

DOSEAGE AND ADMINISTRATION

LONGRANGE® (eprinomectin) should be given only by subcutaneous injection in front of the shoulder at the recommended dosage level of 1 mg eprinomectin per kg body weight (1 mL per 110 lb body weight). Each mL of LONGRANGE contains 50 mg of eprinomectin, sufficient to treat 110 lb (50 kg) body weight. Divide doses greater than 10 mL between two injection sites to reduce occasional discomfort or site reaction.

Body Weight (lb)	Dose Volume (mL)
110	1
220	2
330	3
440	4
550	5
660	6
770	7
880	8
990	9
1100	10

Do not underdose. Ensure each animal receives a complete dose based on a current body weight. Underdosing may result in ineffective treatment, and encourage the development of parasite resistance.



WARNINGS AND PRECAUTIONS

Withdrawal Periods and Residue Warnings

Animals intended for human consumption must not be slaughtered within 48 days of the last treatment. This drug product is not approved for use in female dairy cattle 20 months of age or older, including dry dairy cows. Use in these cattle may cause drug residues in milk and/or in calves born to these cows. A withdrawal period has not been established for pre-ruminating calves. Do not use in calves to be processed for veal.

User Safety Warnings

Not for Use in Humans. Keep this and all drugs out of the reach of children. Reproductive and developmental toxicities have been reported in laboratory animals following high, repeated exposures to N-methyl-2-pyrrolidone (NMP). Pregnant women should wear gloves and exercise caution or avoid handling this product. The Safety Data Sheet (SDS) contains more detailed occupational safety information.

To report adverse effects, to obtain an SDS, or for assistance, contact Boehringer Ingelheim Animal Health USA Inc. at 1-888-637-4251. For additional information about adverse drug experience reporting for animal drugs, contact FDA at 1-888-FDA-VETS or www.fda.gov/reportanimalae.

Animal Safety Warnings and Precautions

The product is likely to cause tissue damage at the site of injection, including possible granulomas and necrosis. These reactions have disappeared without treatment. Local tissue reaction may result in trim loss of edible tissue at slaughter.

Observe cattle for injection site reactions. If injection site reactions are suspected, consult your veterinarian. This product is not for intravenous or intramuscular use. Protect product from light. LONGRANGE® (eprinomectin) has been developed specifically for use in cattle only. This product should not be used in other animal species.

When to Treat Cattle with Grubs

LONGRANGE effectively controls all stages of cattle grubs. However, proper timing of treatment is important. Consult your veterinarian concerning the proper time for treatment.

Environmental Hazards

Not for use in cattle managed in feedlots or under intensive rotational grazing because the environmental impact has not been evaluated for these scenarios.

Other Warnings: Parasite resistance may develop to any dewormer, and has been reported for most classes of dewormers.

Fecal examinations or other diagnostic tests and parasite management history should be used to determine if the product is appropriate for the herd/flock, prior to the use of any dewormer. Following the use of any dewormer, effectiveness of treatment should be monitored (for example, with the use of a fecal egg count reduction test or another appropriate method).

A decrease in a drug's effectiveness over time as calculated by fecal egg count reduction tests may indicate the development of resistance to the dewormer administered. Your parasite management plan should be adjusted accordingly based on regular monitoring.

Macrocyclic lactones provide prolonged drug exposure that may increase selection pressure for resistant parasites. This effect may be more pronounced in extended-release formulations.

TARGET ANIMAL SAFETY

Not for use in bulls, as reproductive safety testing has not been conducted in males intended for breeding or actively breeding. Not for use in calves less than 3 months of age because safety testing has not been conducted in calves less than 3 months of age.

STORAGE

Store at 77° F (25° C) with excursions between 59° and 86° F (15° and 30° C). Protect from light. This information is not comprehensive. Consult your veterinarian for more information. Visit <https://bi-animalhealth.com/cattle/products/longrange> for the FDA approved product label.

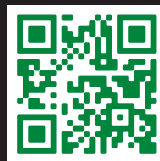
Approved by FDA under NADA # 141-327  
Marketed by: Boehringer Ingelheim Animal Health USA Inc., Duluth, GA 30096  
The Cattle Head Logo® and LONGRANGE® are registered trademarks of Boehringer Ingelheim Animal Health USA Inc.  
© 2022 Boehringer Ingelheim Animal Health USA Inc. All rights reserved.  
1050-2889-99, Rev. 07/2022, 8LDN016F US-BOV-0173-2023A-V2



INVESTING IN LONGRANGE® [EPRINOMECTIN]  
DOESN'T JUST TIP THE SCALES IN YOUR FAVOR.  
**IT DARN NEAR  
BREAKS THEM.**

Getting more from your dewormer starts with a proven investment. LONGRANGE is the first and only dewormer that provides up to 150 days of parasite control.<sup>1</sup> It's how top producers help their herds pack on the pounds, and in turn, bank more bucks. LONGRANGE is the difference between being average and being at the top of your game. So, next time you're deworming cattle, don't just get the job done. **Get it outdoors.**

PROVEN TO PAY OFF IN  
POUNDS AND DOLLARS.  
CALCULATE THE RETURN  
FOR YOUR HERD.



longrangecalculator.com

**OUTLAST. OUTPERFORM. OUTDO.**

**LONGRANGE IMPORTANT SAFETY INFORMATION:** Do not treat within 48 days of slaughter. Not for use in female dairy cattle 20 months of age or older, including dry dairy cows, or in veal calves. Post-injection site damage (e.g., granulomas, necrosis) can occur. These reactions have disappeared without treatment. Not for use in breeding bulls, or in calves less than 3 months of age. Not for use in cattle managed in feedlots or under intensive rotational grazing. Pregnant women should wear gloves and exercise caution or avoid handling this product.

<sup>1</sup> Dependent upon parasite species, as referenced in FOI summary and LONGRANGE product label.